

INTRODUCTION

Arctic and North Atlantic Islands 2012

Itinerary

All promoted itineraries are for general guidance only. Programs may vary depending on local ice and weather conditions and ad hoc decisions by the Expedition Leader to take advantage of opportunities to see wildlife. Flexibility is paramount for expedition cruises. Landings are always subject to weather, local site availabilities and environmental regulations (AECO). *Official sailing plans and landing slots will be scheduled with AECO prior to the start of the season. The final sailing plan will be determined by the Expedition Leader on board. The implementation of the sailing plan is subject to the capability of the vessel and the discretion of the Master.*

Taking the exorbitant high fuel prices into account, it is agreed that Oceanwide Expeditions has the right to reduce the speed of the engines (including sailing on one engine) wherever possible, unless this affects the character of the intended voyage substantially and jeopardizes the safety of the vessel, its crew, staff and passengers.

Rubber Boots and Expedition Jackets

Onboard Plancius all passengers are entitled to use a pair of sturdy rubber boots for free. Sizes need to be pre ordered with Oceanwide's reservation departments the latest 8 weeks prior to departure. A voucher will be sent with final travel documents approximately 4 weeks prior to departure. Laying claims on equipment items without pre-order and voucher cannot be accepted when boarding the vessel. Boots will need to be returned to the expedition team at the end of the voyage. The rubber boots are of high quality, keeping your feet dry, warm and comfortable for all landings. Expedition jackets can also be pre-ordered for a special price. Terms and conditions can be found on the pre-order form.

Shore Excursions and Zodiac Cruising

Guided shore excursions, walks, wildlife spotting and zodiac cruises are included in the fare and will be offered to all passengers during the voyages. We put our emphasis on active wildlife and nature experiences.

Basecamp Plancius – Our activity base

The ship becomes our base camp on selected dates. "Base camp" is by definition a temporary storing and starting place, from which an activity starts, in this instance a "coast to mountain" expedition. During designated "Basecamp Plancius" voyages the ship will be taken to carefully chosen places in the Arctic. The vessel will stay for two or three days at specific locations to serve our active passengers as a comfortable hub to allow more time than usual for wide ranging activities: mountaineers and hikers to climb mountain ranges, kayakers and zodiac passengers to explore near shores where the ship cannot go. Passengers who do not wish to become physically active will enjoy our zodiac excursions and follow the normal shore Program and land excursions (easy to moderate walks and hikes with focus on wildlife). We also offer photo workshops. All adventure activities are free of charge.

Bilingual voyages (B)

English is the ship's language. Some German or French speaking expedition staff will be onboard for bilingual voyages (English – German or English - French). Welcome and safety briefings, announcements, daily briefings, and recaps will be provided in English and German or French. English and German or French lectures may vary in content. Simultaneous translations of lectures will not occur but a summary in the second language may be given at the end of a lecture. Guidance during activities ashore will depend on the group each passenger chooses according to their own physical ability. In the Arctic we aim to split into three groups: a hiking group on a strenuous walk, a medium-paced group with more time for photography etc., and a leisurely group. A German or French speaking staff member will not necessarily be available for each group. During Zodiac cruises, each boat's driver/guide will not necessarily be bilingual.

Polar Diving (D)

Polar divers must be advanced and experienced in dry suit and cold water diving. We hope for 1-2 different dives per day parallel to all other activities. Diving depends on local ice and weather conditions. Dive masters and dive guides are responsible for safety during operation. Basic equipment is onboard (scuba tanks, compressors, weights and diving essentials. Divers bring their personal gear. For prices please refer to our Dates & Rates and more details please refer to the activity manual.

German Speaking (G)

Voyages marked with **G** are full German speaking voyages. All guide lecturers in the expedition team speak German.

INTRODUCTION

Hiking (H)

During hiking voyages we exceed our normal shore excursion walking Program. In general we plan to offer 3 possibilities to become active ashore. There will be easy, moderate and more demanding walks on offer in the vicinity of the landing sites. There are walks on offer which suit everyone's capability. In the Arctic we aim at two hikes per day, each 2 - 3 hours long during morning and / or afternoon landings. Also we offer several full day walks (5 – 7 hrs) with packed lunch. The final decision on those hiking options will be met by the Expedition Leader on the day of the excursion. We recommend bringing a proper pair of ankle high hiking boots and gaiters. Hiking is free of charge, more details can be found in the activity manual and the day by day Programs.

Kayaking (K)

In general we plan to offer 4 kayak days at least. Basic kayak experience is required and physical fitness essential. Parallel to all other activities we are aiming at kayak excursions during morning and / or afternoon landings. The final decision on those excursions will be met by the Expedition Leader on the day of excursion. Oceanwide will provide kayaks and neoprene wet suits. Kayakers will bring their personal gear. Kayaking is subject to weather and prevailing ice conditions. For prices please refer to our Dates & Rates and more details please refer to the activity manual.

Snowshoeing/hiking (S)

Especially on early departures at the beginning of the season there are still snow covered hills and mountains further afield. On North Spitsbergen voyages we are aiming at offering hiking excursions with snowshoes, which are easy to use and which don't require any technical skills. With the use of snowshoes it is easy and safer to walk on snow surfaces. Snowshoes will be provided for everybody on board which fit all boot sizes and can be used in combination with Oceanwide rubber boots. Snowshoe hiking is free of charge, more details in the activity manual and day by day Programs.

Trekking (T)

Oceanwide Expeditions offers an exciting and intensive Arctic 'open air' adventure: 3 days Trekking away from the ship on North Spitsbergen. During the 3 days ashore (2 nights camping on land) the group will be self supplied and will overnight in tents. Participants need to carry their own food and equipment in their rucksack weighing approx 20 kg each (packed in 60 liter rucksacks for women, 80 liter rucksacks for men). Participants bring their personal trekking rucksack, ankle high and robust trekking boots and functional outdoor clothing. Special equipment will be supplied: tents, wind and waterproof bivouac bags (alternative to tent), mattresses and polar sleeping bags to provide warmth and comfort during the night. 15 participants can take part in this trekking programme. Experienced expedition guides will accompany the group on shore. The actual trekking and camping program will depend on the prevailing weather conditions and local site and environmental regulations. For prices please refer to our Dates & Rates and more details please refer to the activity manual or day by day program.

Photo Workshop (P)

On selected voyages and "Basecamp Plancius" voyages Oceanwide Expeditions is going to offer photo workshops for beginners and advanced photographers under the supervision of a photo expert on board. Everybody is welcome to participate, no previous experience required. The workshop group (up to 20 participants per guide per landing, and up to 14 participants per guide on supplemented voyages) will be accompanied by the photo expert during activity ashore. Participants with a special interest in photography will bring their personal photo equipment. During cruise days everybody will be able to listen into photo lectures and workshops in order to learn more about objects, exposures and photo composition. The workshop does not intend to instruct on how to use specific camera models, but more to give an insight on better photo results by respecting basic rules of photography. Photographers can also take part in other activities of their choice. Photo workshops are free of charge on Basecamp voyages, and supplemented on other activity coded voyages. The photo workshop must be pre-booked with Oceanwide's reservation departments prior to departure.

Character of photo workshops: Basecamp Plancius voyages: free "try out" activity for everybody, participants also dip into other activities, group size up to 20 participants per photo guide and landing, daily changing groups, workshop content not too specialised, target group "beginners to experts" who wish to receive daily photo tuition. During photo workshops powered by Leica Akademie (see dates & rates), participants can test Leica camera equipment free of charge.

Activity coded & supplemented voyages: Leica Akademie photo workshop, up to 14 participants will be instructed by a photo guide lecturer of Leica Akademie, homogeneous group, progressive workshop sessions specialise on improving specific photo skills, Leica photo equipment can be tested (cameras and objectives), target group "experts and those who want to become experts".

North Atlantic Islands 2012

All itineraries are for guidance only. Programs may vary depending on local ice and weather conditions and in order to take advantage of opportunities to see wildlife. Flexibility is paramount for expedition cruises.

North Atlantic Odyssey - *Whale Safari*

PLA04V	Jun 07 – Jun 18	11 nights	Vlissingen - Longyearbyen aboard Plancius
OTL05V	Jun 15 – Jun 26	11 nights	aboard Ortelius

For this voyage passengers can board the ship in Vlissingen (The Netherlands) on June 07 or June 15 (OTL05V) and sail from there to Aberdeen (arrival June 09 or June 17-OTL05A) where more passengers will board the ship.

North Atlantic Odyssey - *Whale Safari*

PLA04A	Jun 09 – Jun 18	09 nights	Aberdeen - Longyearbyen aboard Plancius
OTL05A	Jun 17 – Jun 26	09 nights	aboard Ortelius



Day 1 (June 07, June 15 on OTL05V) - In Vlissingen passengers will board the ship at mid-day.

Day 2 - We cross the North Sea

Day 3 (June 09, June 17 on OTL05A) - Arrive in Aberdeen, famed as the Granite City and many times a winner of the Britain in Bloom competition, and embark on our trip. The lighthouse on Girdle Ness to the south as the North Sea is reached, was designed by the grandfather of Robert Louis Stevenson.

More passengers will board the ship in Aberdeen.

The Scottish waters offer excellent possibilities to spot Minke Whales, White-beaked Dolphins and Harbour Porpoises. Several other cetaceans, including Orcas (Killer Whales), are also native to these waters.

Day 4 - At Fair Isle, in the Shetlands, we are welcomed by the 70 or so inhabitants (famed for their knitwear, examples of which we will see) to be followed by a walk to the bird observatory. Later, on Mousa, one of the smaller Shetland Islands, we visit one of the best preserved brochs in Scotland. Brochs are circular stone towers probably built by the Picts. During a night excursion we will watch thousands of Storm Petrels return to their burrows or crevices. By day we view Grey Seals, Black Guillemots, Red-throated Divers, Arctic Skuas and a wonderful Spring Flora.

Day 5 and 6 - We sail north to the Norwegian island of Jan Mayen, situated 300 nautical miles north-east of Iceland. During our two days at sea there will be plenty of time to watch for the blow of a Minke, Fin or Blue Whale, which could herald a rewarding encounter with these gentle giants. Perhaps we might run into a pod of Orcas, who can often be quite curious about boats such as ours.

Day 7 - Jan Mayen is a volcanic island of breathtaking beauty and mystique, dominated by Mt Beerenberg. From the slopes of the 2300m volcano, impressive glaciers spill into the sea. Until recently, the island was off-limits as it is a military base, and was rarely visited by tourists, but with permission from the Norwegian authorities we hope to visit the weather station. We will also walk across the island to Kvalrossbukta to look at the remains of a 17th century Dutch whaling station and a substantial colony of Fulmars. We also plan to sail by Koksletta where thousands of Little Auks and Brünnich's Guillemots breed close to a glacier, watched over by Glaucous Gulls.

Days 8 and 9 - In the midnight sun we sail north along the edge of the sea-ice, looking out for different species of whales, dolphins, seals and a variety of seabirds, until the sea-ice stops us, then we will sail to North Spitsbergen.

Day 10 - Depending on the position of the sea-ice, we sail into Raudfjord or one of the other fjords in Northwest Spitsbergen, where we have chances of seeing Polar Bears at the heads of the fjords, where seals are sunbathing on the fjord-ice. At Fuglesangen we have an opportunity to see thousands of Little Auks on their breeding grounds.

Day 11 - Fuglehuken the northern tip of Prince Karls Forland is probably the place where Willem Barentsz made the first landing in Spitsbergen. It is an area with beautiful seabird-colonies and many remains of the Polar Bear hunting period of a century ago. Later we will look for Walruses at Sarstangen, Engelskmansbukta or Poole-Pynten. In the evening we could land at Alkhornet another seabird colony where at the slopes we can find Reindeer and Arctic Foxes.

Day 12 (June 18) - We disembark in Longyearbyen, the administrative centre of Spitsbergen, for flights south to Oslo and onward home.

Spitsbergen 2012

All itineraries are for guidance only. Programs may vary depending on local ice and weather conditions and in order to take advantage of opportunities to see wildlife. Flexibility is paramount for expedition cruises.

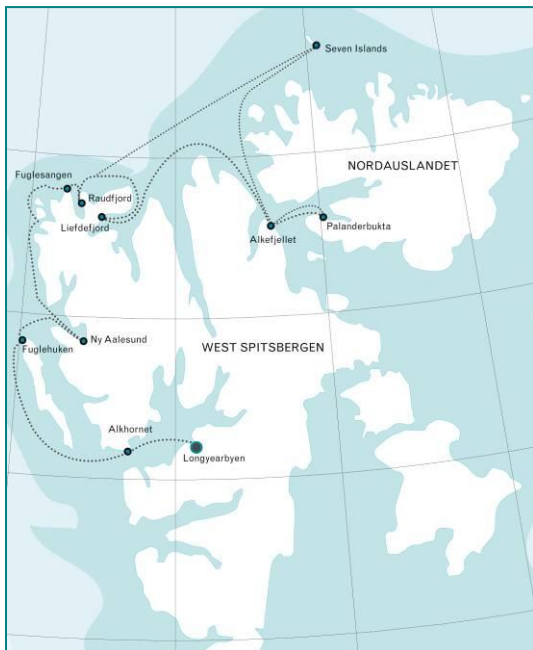
North Spitsbergen

PLA05 D K S

Jun 18 – Jun 25

07 nights

Longyearbyen - Longyearbyen
aboard Plancius



Day 1 - Arrive in Longyearbyen, the administrative capital of the Spitsbergen archipelago of which West Spitsbergen is the largest island. Before embarking there is an opportunity to stroll around this former mining town, whose parish church and Polar Museum are well worth visiting, while in the surrounding area of Longyearbyen, more than 100 species of plants have been recorded. In the early evening the ship will sail out of Isfjorden.

Day 2 - Heading north along the west coast, we arrive by morning in Krossfjorden, where we get on the Zodiacs for an exhilarating cruise along the sculpted front of the 14th of July Glacier. On the surprisingly fertile slopes near the glacier, a colourful variety of flowers bloom, while large numbers of Kittiwakes and Brünnich's Guillemots nest on the nearby cliffs. There is also a good chance of spotting opportunistic Arctic Foxes, patrolling the base of the cliffs in case a hapless chick falls from its nest, and Bearded Seals, who cruise this scenic fjord. In the afternoon we sail to Ny Ålesund, the world's most northerly settlement. Once a mining village - served by the world's most northerly railway, which can still be seen - Ny Ålesund is now a research centre. Close to the village is a breeding ground for Barnacle Geese, Pink-footed Geese and Arctic Terns. Visitors interested in the history of Arctic exploration will want to walk to the anchoring mast used by Amundsen and Nobile in the airship *Norge* in 1926 and Nobile in the airship *Italia* in 1928 before their flights to the North Pole.

Day 3 - Depending on the weather we may now sail to the mouth of Liefdefjorden and go ashore for a walk on the tundra island of Andøya. Many Common Eiders and Pink-footed Geese nest here, and the rarer King Eider may also be seen. We hope to sail into Liefdefjorden, cruising near the 5km long face of the impressive Monaco Glacier. The waters of the glacier front are a favourite feeding spot for thousands of Kittiwakes and on previous voyages Polar Bears have been seen on the glacier, providing wonderful opportunities for photography.

Day 4 - Today we will sail into Hinlopen Strait, home to Bearded Seals, Ringed Seals, Polar Bears, and Ivory Gulls. We'll navigate the ice floes of Lomfjordshalvøya in our zodiacs and explore the bird cliffs of Alkefjellet with thousands of Brünnich's guillemots. On the east side of Hinlopenstrait, we'll attempt a landing at Palanderbukta on Nordaustlandet, home to Reindeer, Pink-footed Geese, breeding Ivory Gulls, and Walruses.

Day 5 - Today we will reach our northernmost point at Phippsøya, in the Seven Islands north of Nordaustlandet. Here we will be at 81 degrees north, just 540 miles from the geographic North Pole. Polar Bears inhabit this region, along with Ivory Gulls. We may sit for several hours in the pack ice, taking in our spectacular surroundings and seeing a Ross Gull, before we turn south again.

Day 6 - Retracing our route westwards, we visit Raudfjord on the north coast of West Spitsbergen, a beautiful fjord dominated by spectacular glaciers and favoured by Ringed and Bearded Seals. The cliffs and shoreline of the fjord also support thriving seabird colonies and a surprisingly rich vegetation, which flourishes in sheltered spots. On the offshore island of Ytre Norskøya, we visit a 17th century Dutch whaling site, whose large graveyard is a poignant reminder of the hardships and dangers of life here at that time. The island's bird life is prolific, with colonies of Little Auks, Black Guillemots, Brünnich's Guillemots, Puffins and Arctic Skuas accessible to visitors.

Day 7 - We land at the northern tip of Prins Karls Forland near Fuglehuken, where Barentsz probably set foot on Spitsbergen for the first time. Seabirds nest on the cliffs and along the coast we see Harbour Seals, the only population found in Spitsbergen. Further we also will observe the remains of the Polar Bear hunting era, with demolished set guns and bear traps. At the opposite site of Forlandsundet at Sarstangen is a haul out place for Walruses. Alternatively we sail into St. Johns Fjord or south to the mouth of Isfjorden and land at Alkhorneret. Seabirds nest on its cliffs and Arctic Foxes search the cliff base for fallen eggs and chicks, while Spitsbergen Reindeer graze the relatively luxuriant vegetation. The reindeer may seem unbothered by human presence, but this is not really the case. The animals must survive the harsh winter, when temperatures plummet and food is hard to find, so they preserve what energy they can, fleeing only when it is absolutely necessary. In the afternoon we cruise through beautiful Borebukta, following a glacier front before continuing to Longyearbyen.

Day 8 - We disembark in Longyearbyen, the administrative centre of Spitsbergen, for flights south to Oslo and onward home.

Polar Bear Special - North Spitsbergen

ATD06 G
OTL06

Jun 24 – Jul 01
Jun 26 – Jul 03

07 nights
07 nights

Longyearbyen - Longyearbyen
aboard Antarctic Dream
aboard Ortelius



Day 1 - Arrive in Longyearbyen, the administrative capital of the Spitsbergen archipelago of which West Spitsbergen is the largest island. Before embarking there is an opportunity to stroll around this former mining town, whose parish church and Polar Museum are well worth visiting, while in the surrounding area of Longyearbyen, more than 100 species of plants have been recorded. In the early evening the ship will sail out of Isfjorden.

Day 2 - We visit Sallyhamna in Holmiabukta where in the last two years a Fin Whale carcass has attracted Polar Bears. Later we sail to Raudfjord on the north coast of West Spitsbergen, a beautiful fjord dominated by spectacular glaciers and favoured by Ringed and Bearded Seals. The cliffs and shoreline of the fjord also support thriving seabird colonies and a surprisingly rich vegetation, which flourishes in sheltered spots.

Day 3 - Depending on the weather we may now sail to the mouth of Liefdefjorden and go ashore for a walk on the tundra island of Andøya. Many Common Eiders and Pink-footed Geese nest here, and the rarer King Eider may also be seen. We hope to sail into Liefdefjorden, cruising near the 5km long face of the impressive Monaco Glacier. The waters of the glacier front are a favourite feeding spot for thousands of Kittiwakes and on previous

voyages Polar Bears have been seen on the glacier, providing wonderful opportunities for photography.

Day 4 - Today we will sail into Hinlopen Strait, home to Bearded Seals, Ringed Seals, Polar Bears, and Ivory Gulls. We'll navigate the ice floes of Lomfjordshalvøya in our zodiacs and explore the bird cliffs of Alkefjellet with thousands of Brünnich's guillemots. On the east side of Hinlopenstrait, we'll attempt a landing at Palanderbukta on Nordaustlandet, home to Reindeer, Pink-footed Geese, breeding Ivory Gulls, and Walruses.

Day 5 - In the morning we will try to land at Laagoya, a haul-out place for Walruses. Later we will reach our northernmost point at Phippsøya, in the Seven Islands north of Nordaustlandet. Here we will be at 81 degrees north, just 540 miles from the geographic North Pole. Polar Bears inhabit this region, along with Ivory Gulls. We may sit for several hours in the pack ice, before we turn west again.

Day 6 - Retracing our route westwards, we sail all the time through and along the pack-ice, on the watch for Polar Bears and the elusive Greenland Whale (Bowhead).

Day 7 - We land at the northern tip of Prins Karls Forland near Fuglehuken, where Barentsz probably set foot on Spitsbergen for the first time. Seabirds nest on the cliffs and along the coast we see Harbour Seals, the only population found in Spitsbergen. Further we also will observe the remains of the Polar Bear hunting era, with demolished set guns and bear traps. At the opposite site of Forlandsundet at Sarstangen is a haul out place for Walruses. Alternatively we sail into St. Johns Fjord or south to the mouth of Isfjorden and land at Alkhornet. Seabirds nest on its cliffs and Arctic Foxes search the cliff base for fallen eggs and chicks, while Spitsbergen Reindeer graze the relatively luxuriant vegetation. At nighttime we arrive in Longyearbyen.

Day 8 - We disembark in Longyearbyen, the administrative centre of Spitsbergen, for the flights south to Oslo and onward home.

North Spitsbergen *Basecamp*

PLA06 DKPST

Jun 25 – Jul 04

09 nights

Longyearbyen - Longyearbyen
aboard Plancius



Day 1 - Arrive in Longyearbyen, the administrative capital of the Spitsbergen archipelago of which West Spitsbergen is the largest island. Before embarking there is an opportunity to stroll around this former mining town, whose parish church and Polar Museum are well worth visiting. In the early evening the ship will sail out of Isfjorden.

Day 2 - Heading north along the west coast, we arrive by morning in Krossfjorden, where we take to the Zodiacs for a cruise along the front of the 14th of July Glacier. On the slopes near the glacier, a colourful variety of flowers bloom, while large numbers of Kittiwakes and Brünnich's Guillemots nest on the nearby cliffs. There is also a good chance of spotting Arctic Foxes, patrolling the base of the cliffs in case a chick falls from its nest, and Bearded Seals, who cruise this fjord. In the afternoon we sail to Ny Ålesund, the world's most northerly settlement. Once a mining village - served by the world's most northerly railway, which can still be seen - Ny Ålesund is now a research centre. Close to the village is a breeding ground for Barnacle Geese, Pink-footed Geese and Arctic Terns. Visitors interested in the history of Arctic exploration will want to walk to the anchoring mast used by Amundsen and Nobile in the airship *Norge* in 1926 and Nobile in the airship *Italia* in 1928 before their flights to the North Pole.

Day 3 - On the offshore island of Ytre Norskøya, we visit a 17th century Dutch whaling site, whose large graveyard is a reminder of the hardships and dangers of life here at that time. The island's bird life is prolific, with colonies of Little Auks, Black Guillemots, Brünnich's Guillemots, Puffins and Arctic Skuas accessible to visitors. Eastwards, we visit Raudfjord on the north coast of West Spitsbergen, a beautiful fjord dominated by spectacular glaciers and favoured by Ringed and Bearded Seals. The cliffs and shoreline of the fjord also support thriving seabird colonies and a surprisingly rich vegetation, which flourishes in sheltered spots.

Day 4 - We will be the whole day in the Raudfjord system, with ample opportunities for kayaking and hiking (with or without snow-shoes) on short or long walks (easy, moderate and challenging hikes are on offer). The trekking group will set off for its three days expedition to the southeast, to be picked up at Liefdefjord. **Please note: Trekking is a supplemented activity and only available on request.**

Day 5 - Depending on the weather we may now sail to the mouth of Liefdefjorden and go ashore for a walk on the tundra island of Andøya. Many Common Eiders and Pink-footed Geese nest here, and the rarer King Eider may also be seen. We hope to sail into Liefdefjorden, cruising near the 5km long face of the impressive Monaco Glacier. The waters of the glacier front are a favourite feeding spot for thousands of Kittiwakes and on previous voyages Polar Bears have been seen on the glacier, providing wonderful opportunities for photography. The whole day we will have good opportunities for kayaking, short (easy), longer (moderate to challenging) hikes (with or without snow-shoes).

Day 6 - At Bockfjord there are warm water springs with colourful sediments, close to the shore and about 10 km inland. There we can climb a volcano which had erupted some thousands of years ago. This is about the warmest area of Spitsbergen with stands of Cassiope and Dryas vegetation. The shores of Woodfjord are littered with hundreds of large timber logs from Siberia. Another day full of Basecamp activities: Kayaking and hiking! In late evening we continue our voyage, in order to pick up the trekking group in Liefdefjorden after three days.

Day 7 - Today we will sail into Hinlopen Strait, home to Bearded Seals, Ringed Seals, Polar Bears, and Ivory Gulls. We'll navigate the ice floes of Lomfjordshalvøya in our zodiacs and explore the bird cliffs of Alkefjellet with thousands of Brünnich's guillemots. On the east side of Hinlopenstrait, we'll attempt a landing at Palanderbukta on Nordaustlandet, home to Reindeer, Pink-footed Geese, breeding Ivory Gulls, and Walruses.

Day 8 - Today we will reach our northernmost point at Phippsøya, in the Seven Islands north of Nordaustlandet. Here we will be at 81 degrees north, just 540 miles from the geographic North Pole. Polar Bears inhabit this region, along with Ivory Gulls. We may sit for several hours in the pack ice, taking in our spectacular surroundings and seeing a Ross Gull, before we turn south again.

Day 9 - We land at the northern tip of Prins Karls Forland near Fuglehuken, where Barentsz probably set foot on Spitsbergen for the first time. Seabirds nest on the cliffs and along the coast we see Harbour Seals, the only population found in Spitsbergen. Further we also will observe the remains of the Polar Bear hunting era, with demolished set guns and bear traps. At the opposite site of Forlandsundet at Sarstangen is a haul out place for Walruses. Alternatively we sail into St. Johns Fjord or south to the mouth of Isfjorden and land at Alkhornet. Seabirds nest on its cliffs and Arctic Foxes search the cliff base for fallen eggs and chicks, while Spitsbergen Reindeer graze the relatively luxuriant vegetation. The reindeer may seem unbothered by human presence, but this is not really the case. The animals must survive the harsh winter, when temperatures plummet and food is hard to find, so they preserve what energy they can, fleeing only when it is absolutely necessary. In the afternoon we cruise through beautiful Borebukta, following a glacier front before continuing to Longyearbyen.

Day 10 - We disembark in Longyearbyen, the administrative centre of Spitsbergen, for the flights south to Oslo and onward home.

Around Spitsbergen

ATD07	Jul 01 – Jul 10	09 nights	Longyearbyen - Longyearbyen aboard Antarctic Dream
OTL07	Jul 03 – Jul 12	09 nights	aboard Ortelius
PLA07	D Jul 04 – Jul 13	09 nights	aboard Plancius
ATD08	G Jul 10 – Jul 19	09 nights	aboard Antarctic Dream
OTL08	Jul 12 – Jul 21	09 nights	aboard Ortelius
PLA08	Jul 13 – Jul 22	09 nights	aboard Plancius
ATD09	G Jul 19 – Jul 28	09 nights	aboard Antarctic Dream
OTL09	Jul 21 – Jul 30	09 nights	aboard Ortelius
PLA09	Jul 22 – Jul 31	09 nights	aboard Plancius
ATD10	Jul 28 - Aug 06	09 nights	aboard Antarctic Dream
PLA10	G Jul 31- Aug 09	09 nights	aboard Plancius

The ice conditions will determine the sailing plan, but the following is a realistic plan.



Day 1 - Arrive in Longyearbyen, the administrative capital of the Spitsbergen archipelago of which West Spitsbergen is the largest island. Before embarking there is an opportunity to stroll around this former mining town, whose parish church and Polar Museum are well worth visiting. In the early evening the ship will sail out of Isfjorden.

Day 2 - Heading north along the west coast, we arrive by morning in Krossfjorden, where we go on the Zodiacs for a cruise along the sculpted front of the 14th of July Glacier. On the green slopes near the glacier, a colourful variety of flowers bloom, while large numbers of Kittiwakes and Brünnich's Guillemots nest on the nearby cliffs. There is also a good chance of spotting Arctic Foxes, who patrol the base of the cliffs in case a chick falls from its nest, and Bearded Seals, who cruise this fjord. In the afternoon we sail to Ny Ålesund, the world's most northerly settlement.

Once a mining village - served by the world's most northerly railway, which can still be seen - Ny Ålesund is now a research centre. Close to the village is a breeding ground for Barnacle Geese, Pink-footed Geese and Arctic Terns. Visitors interested in the history of Arctic exploration will want to walk to the anchoring mast used by Amundsen and Nobile in the airship *Norge* in

1926 and Nobile in the airship *Italia* in 1928 before their flights to the North Pole.

Day 3 - Near the mouth of Liefdefjorden, we will go ashore for a walk on the tundra island of Andøya. Many common eiders and pink-footed geese nest here, and the more rare King Eider may also be seen. Sailing into Liefdefjorden, we will cruise near the face of the impressive Monaco Glacier. The waters of the glacier front are a favourite feeding spot for thousands of kittiwakes and occasionally polar bears are seen on the glacier.

Day 4 - Today we will reach our northernmost point at Phippsøya, in the Seven Islands north of Nordaustlandet. Here we will be at 81 degrees north, just 540 miles from the geographic North Pole. Polar bears inhabit this region, along with ivory gulls. We may sit for several hours in the pack ice, taking in our spectacular surroundings and seeing a Ross gull, before we turn south again.

Day 5 - We will visit Laagøya today, a low island with a big lagoon where a big herd of Walrus tends to congregate. Sabine's Gulls nest on the island as well. At Sorg Fjord we may find another herd of walrus not far from the graves of 17th century whalers. On a nature walk, we may encounter families of ptarmigans.

Day 6 - Today we will sail into Hinlopen Strait, home to Bearded Seals, Ringed Seals, Polar Bears, and Ivory Gulls. We'll navigate the ice floes of Lomfjordshalvøya in our zodiacs and explore the bird cliffs of Alkefjellet with thousands of Brünnich's guillemots. On the east side of Hinlopenstrait, we'll attempt a landing at Augustabukta on Nordaustlandet, home to Reindeer, Pink-footed Geese, breeding Ivory Gulls, and Walrus. Near Torrelneset, we will explore the polar desert of Nordaustlandet, next to the world's third largest ice cap, which meets the sea nearby. We will walk along beautiful coastline covered in smooth rocks, sculpted by the surf over thousands of years. We may encounter walrus along the way.

Day 7 - In Freemansundet we plan to land at Sundneset on the island of Barentsøya to visit an old trapper's hut and then take a brisk walk across the tundra in search of Spitsbergen Reindeer and Barnacle Geese. Later we cruise south to Diskobukta on the west side of Edgeøya. After a Zodiac cruise through the shallow bay, we land on a beach littered with whale bones and tree

trunks, which have drifted here from Siberia. We can also climb to the rim of a narrow gully which is inhabited by thousands of Kittiwakes, together with Black Guillemots and piratical Glaucous Gulls. During the breeding season, the base of the cliffs is patrolled by Arctic Foxes and Polar Bears, especially females with young cubs, searching for young birds that have fallen from the nesting ledges.

Day 8 - We start the day quietly cruising the side fjords of the spectacular Hornsund area of southern Spitsbergen, enjoying the scenery of towering mountain peaks. Hornsundtind rises to 1,431m while Bautaen shows why early Dutch explorers gave the name 'Spitsbergen' - pointed mountains - to the island. There are also 14 magnificent glaciers in the area and very good chances of encounters with seals and Polar Bears.

Day 9 - Today we land on Ahlstrandhalvøya at the mouth of Van Keulenfjorden. Here piles of Beluga skeletons (the Beluga is a small white whale), the remains of 19th century slaughter, are yet another reminder of the consequences of thoughtless exploitation. Fortunately, Belugas were not hunted to the edge of extinction and may still be seen locally. Indeed, there is a good chance that we will come across a pod. Cruising into Recherchefjorden during the afternoon we can explore an area of tundra at the head of the fjord where many Reindeer feed.

Day 10 - Return to Longyearbyen and disembark for the transfer to the airport and the flight to Oslo and home.

N.B.
The chances that we can complete a full Spitsbergen Circumnavigation (based on our experiences from 1992 until 2010) are about, 30 % in the first half of July, 60 % in the second half of July, 90% in the first half of August, 95% in the second half of August. In case we cannot complete a full circumnavigation we will mostly resort to a program in Northeast or Southeast Spitsbergen.

This special voyage is dedicated to an intense nature experience in remote areas. We will offer full-day hikes to explore the rarely visited interior of various islands, which has been seen by reindeer and polar bears rather than by man. We will also offer shorter excursions in the same areas.



Day 1 - Arrive in Longyearbyen, the administrative capital of the Spitsbergen archipelago of which West Spitsbergen is the largest island. Before embarking there is an opportunity to stroll around this former mining town, whose parish church and Polar Museum are well worth visiting. In the early evening the ship will sail out of Isfjorden.

Day 2 - Heading north along the west coast, we arrive by morning in Krossfjorden, where we take the Zodiacs for a cruise along the front of the 14th of July Glacier. On the green slopes near the glacier, a colourful variety of flowers bloom, while large numbers of Kittiwakes nest on the nearby cliffs. There is also a good chance of spotting Arctic Foxes, who patrol the base of the cliffs in case a chick falls from its nest, and Bearded Seals, who cruise this scenic fjord. In the afternoon we sail to Blomstrand to climb to the top of the island to obtain a splendid view across the strait where until a few years ago a glacier connected the island with the mainland.

Day 3 - In Bockfjord the long hikers will set off for a day's hike to the warm springs about 8 km inland and will walk along glaciers and a volcano in one of the warmest areas in Spitsbergen in the summer. The shorter walkers will explore the warm springs along the coast in the morning and a lagoon on the

spectacular Red Sandstone of Woodfjord, which derives its name from the immense numbers of logs washed ashore. In the evening we sail to the Monaco Glacier in Liefdefjord.

Day 4 - We will visit Laagøya today, a low island with a big lagoon where a big herd of Walrus tends to congregate. Sabine's Gulls nest on the island as well. We will reach our northernmost point at Phippsøya, in the Seven Islands north of Nordaustlandet. Here we will be at 81 degrees north, just 540 miles from the geographic North Pole. Polar bears inhabit this region, along with ivory gulls. We may sit for several hours in the pack ice, taking in our spectacular surroundings and seeing a polar bear or two, before we turn south again.

Day 5 - Hinlopen Strait separates the two largest islands of Svalbard, Spitsbergen and Nordaustland. In Palanderbukta, surrounded by glacier fronts, we will set foot on Nordaustland and explore this desert-like, yet beautiful environment. The hikers will follow Palanderdalen, an ice-free corridor between two major ice-caps of Nordaustland. After about 20 km of polar desert, Augustabukta is reached, where an ascent on the ice-cap is easy. On the tundra we usually see a lot of reindeer. Both landings, Augustabukta Palanderbukta and Augutabukta, will also be done without the long hike. Nearby on Torrellneset there is a large herd of walrus.

Day 6 - The east coast of West-Spitsbergen is very rarely visited during the summer. We will sail along Negribreen one of the rare shelf-ice glaciers in the Arctic. At Teistpynten near Mohnbukta, all passengers will have the opportunity to have a stroll along the coast and on the tundra with many reindeer and with good views of again the front of the Negri-breen. Some of the Mesozoic sediment layers in this area are very rich in fossils such as ammonites and bivalves. During mid-day, the ship repositions further south to Agardhfjell. Excursion opportunities include a 5 hours inland walk to a colony of ivory gulls.

- Alternatively we offer-

Sundneset at the south-eastern corner of Barentsøya with a lush tundra vegetation and often large numbers of reindeer. Following a river up to a waterfall, the hikers will cover about 17 km to enjoy splendid views.

Alternatively, a shorter landing at Sundneset, including highlights such as rich tundra, a waterfall and good chances for encounters with reindeer, will be supplemented with another excursion at Rindedalen on the south side of Barentsøya.

Day 7 - In Diskobukta, a good 20 km further southeast, we find a small canyon with a colony of Kittiwakes. Kapp Lee near the north-western corner of Edgeøya has been a focal point for hunting and scientific expeditions for centuries. Land uplift that followed the ice-age has left its traces in shape of ancient whalebones and driftwood far from the coast, having a respectable age of several 1000 years. The opportunity to hike from Diskobukta to Kapp Lee enables us to appreciate the whole coastline with plentiful driftwood, whalebones and potential wildlife surprises. Alternatively, it will be possible to land both at Diskobukta and Kapp Lee without a long hike.

Day 8 - The Hornsund at the west coast of Spitsbergen is surrounded by glaciers and mountains including the Hornsundtind (1.431 m) and the needle-shaped Bautaen. A day hike up to the mountain Ostragrodskyfjell in Brepollen, the innermost part of the Hornsund, will provide spectacular views of the glacier landscape, which can alternatively be explored by Zodiac. In the late afternoon, Burgerbukta on the northern side of the Hornsund will make clear why some think of the Hornsund as the most beautiful fjord of Spitsbergen.

Day 9 - Today we land on Ahlstrandhalvøya at the mouth of Van Keulenfjorden. Here piles of Beluga skeletons (the Beluga is a small white whale), the remains of 19th century slaughter, are yet another reminder of the consequences of thoughtless exploitation. Fortunately, Belugas were not hunted to the edge of extinction and may still be seen locally. Indeed, there is a good chance that we will come across a pod. Cruising into Recherchefjorden during the afternoon we can explore an area of tundra at the head of the fjord where many Reindeer feed.

Day 10 - Return to Longyearbyen and disembark for the transfer to the airport and the flight to Oslo and home.

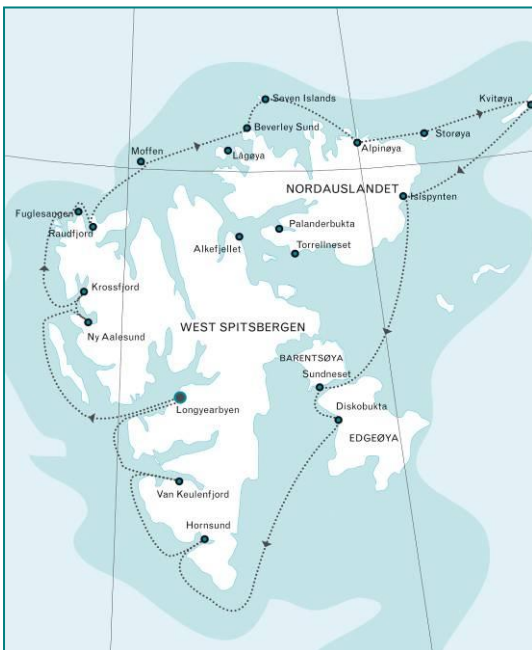
Around Spitsbergen – Kvitøya

PLA11 B K

Aug 09 – Aug 19

10 nights

Longyearbyen - Longyearbyen
aboard Plancius



Day 1 - Arrive in Longyearbyen, the administrative capital of the Spitsbergen archipelago of which West Spitsbergen is the largest island. Before embarking there is an opportunity to stroll around this former mining town, whose parish church and Polar Museum are well worth visiting, while in the surrounding area of Longyearbyen. In the early evening the ship will sail out of Isfjorden.

Day 2 - On the offshore island of Ytre Norskøya, we visit a 17th century Dutch whaling site, whose large graveyard is a reminder of the hardships and dangers of life here at that time. The island's bird life is prolific, with colonies of Little Auks, Black Guillemots, Brünnich's Guillemots, Puffins and Arctic Skuas accessible to visitors. Eastwards, we visit Raudfjord on the north coast of West Spitsbergen, a beautiful fjord dominated by spectacular glaciers and favoured by Ringed and Bearded Seals. The cliffs and shoreline of the fjord also support thriving seabird colonies. In the evening we will sail by the island of Moffen where a big herd of Walrus can be found.

Day 3 - We sail through Beverleysundet named by Parry in 1827 and also sailed by the Swedish-Russian Arc-of-Meridian Expedition in 1898. Today we will reach our northernmost point at Phippsøya, in the Seven Islands north of

Nordaustlandet. Here we will be at 81 degrees north, just 540 miles from the geographic North Pole. Polar bears inhabit this region, along with ivory gulls.

Day 4 - We push east to reach the area of Nordaustlandet, where the Nobile expedition drifted around in 1928 and where the Italian Sora tried to come to the rescue. There we hope to get to Alpinøya, reached by Sora in 1928, and then to the mouth of Finn Malmgrenfjord, and Albertinibukta and to climb Soraberget (205 M) from where we have a fantastic view on the ice-cap of Nordaustlandet. Alternatively we will land at Storøya, where again we may meet a group of Walruses.

Day 5 - Today we hope to get to the rarely visited Kvitøya farthest to the east, close to the Russian territory. The island is dominated by an ice-cap, which leaves a small area bare of ice and snow. We will land at the western tip at Andréneset, where the Swedish explorer André and his companions perished in 1898. We will also try to get to Kraemerpynten in the east, where an enormous group of Walruses resides.

Day 6 - South of Nordaustlandet we will try to land at Isispynten a Nunatak area surrounded by glaciers. Later we sail along the front of the Brasvell Glacier, the longest glacier front in Spitsbergen. In Olga Strait we have chances to spot the elusive Greenland Whale.

Day 7 - We will sail through the seldom visited area of Kong Karls Land, which is a Polar Bear reserve, where we are not allowed to land, but where we can make a zodiac cruise. Alternatively we land in Blafjordflya at the east side of Edgeøya, a vast tundra area with a lot of reindeer.

Day 8 - In Freemansundet we plan to land at Sundneset on the island of Barentsøya to visit an old trapper's hut and then take a brisk walk across the tundra in search of Spitsbergen Reindeer and Barnacle Geese. Later we cruise south to Diskobukta on the west side of Edgeøya. After a Zodiac cruise through the shallow bay, we land on a beach littered with whale bones and tree trunks, which have drifted here from Siberia. We can also climb to the rim of a narrow gully which is inhabited by thousands of Kittiwakes, together with Black Guillemots and piratical Glaucous Gulls. During the breeding season, the base of the cliffs is patrolled by Arctic Foxes and Polar Bears, searching for young birds that have fallen from the nesting ledges.

Day 9 - We start the day quietly cruising the side fjords of the spectacular Hornsund area of southern Spitsbergen, enjoying the scenery of towering mountain peaks. Hornsundtind rises to 1,431m while Bautaen shows why early Dutch explorers gave the name 'Spitsbergen' - pointed mountains - to the island. There are also 14 magnificent glaciers in the area and very good chances of encounters with seals and Polar Bears. We may visit the Polish research station where the friendly staff will give us an insight into their research projects. Behind the station the mountains are home to thousands of pairs of nesting Little Auks.

Day 10 - Today we land on Ahlstrandhalvøya at the mouth of Van Keulenfjorden. Here piles of Beluga skeletons (the Beluga is a small white whale), the remains of 19th century slaughter, are yet another reminder of the consequences of thoughtless exploitation. Fortunately, Belugas were not hunted to the edge of extinction and may still be seen locally. Indeed, there is a good chance that we will come across a pod. Cruising into Recherchefjorden during the afternoon we can explore an area of tundra at the head of the fjord where many Reindeer feed.

Day 11 - Return to Longyearbyen and disembark for the transfer to the airport and the flight to Oslo and home.

<p>N.B. The chances that we can complete a full Spitsbergen Circumnavigation (based on our experiences from 1992 until 2010) are about, 90 % in the first half of August, 95% in the second half of August. In case we can not complete a full circumnavigation including Nordaustlandet we will sail through Hinlopen Street.</p>



Day 1 - Arrive in Longyearbyen, the administrative capital of the Spitsbergen archipelago of which West Spitsbergen is the largest island. Before embarking there is an opportunity to stroll around this former mining town, whose parish church and Polar Museum are well worth visiting, while in the surrounding area of Longyearbyen. In the early evening the ship will sail out of Isfjorden.

Day 2 - We visit Raudfjord on the north coast of West Spitsbergen, a beautiful fjord dominated by spectacular glaciers and favoured by Ringed and Bearded Seals and where we often see Polar Bears. In the evening we will sail by the island of Moffen where a big herd of Walrus can be found.

Day 3 - At Laagøya a haul-out place for Walrus we make a landing. Later we sail through Beverleysundet named by Parry in 1827 and also sailed by the Swedish-Russian Arc-of-Meridian Expedition in 1898. Today we will reach our northernmost point at Phippsøya, in the Seven Islands north of Nordaustlandet. Here we will be at 81 degrees north, just 540 miles from the geographic North Pole. Polar bears inhabit this region, along with ivory gulls.

Day 4 - We push east to reach the area of Nordaustlandet, where the Nobile expedition drifted around in 1928 and where the Italian Sora tried to come to the rescue. There we hope to get to Alpinøya, reached by Sora in 1928, and then to the mouth of Finn Malmgrenfjord, and Albertinibukta and to climb Soraberget (205 M) from where we have a fantastic view on the ice-cap of Nordaustlandet. Alternatively we will land at Storøya, where again we may meet a group of Walruses.

Day 5 - Today we hope to get to the rarely visited Kvitøya farthest to the east, close to the Russian territory. The island is dominated by an ice-cap, which leaves a small area bare of ice and snow. We will land at the western tip at Andréneset, where the Swedish explorer André and his companions perished in 1898. We will also try to get to Kraemerpynten in the east, where an enormous group of Walruses resides.

Day 6 - We retrace our voyage to the west, but now all the time through and along the pack-ice north of Spitsbergen. We may sail north of Phippsøya, in the Seven Islands, 81 degrees north, just 540 miles from the geographic North Pole. Polar bears inhabit this region, along with ivory gulls.

Day 7 - We are still at the ice, northwest of Spitsbergen and later turn south, where we get to a good area for whales.

Day 8 - Return to Longyearbyen and disembark for the transfer to the airport and the flight to Oslo and home.

All itineraries are for guidance only. Programs may vary depending on local ice and weather conditions and in order to take advantage of opportunities to see wildlife. Flexibility is paramount for expedition cruises.

Map to follow

Day 1 - Arrive in Longyearbyen, the administrative capital of the Spitsbergen archipelago of which West Spitsbergen is the largest island. Before embarking there is an opportunity to stroll around this former mining town, whose parish church and Polar Museum are well worth visiting. In the early evening the ship will sail out of Isfjorden.

Day 2 - Heading north along the west coast, we arrive by morning in Krossfjorden, where we go on the Zodiacs for a cruise along the sculpted front of the 14th of July Glacier. On the green slopes near the glacier, a colourful variety of flowers bloom, while large numbers of Kittiwakes and Brünnich's Guillemots nest on the nearby cliffs. There is also a good chance of spotting Arctic Foxes, who patrol the base of the cliffs in case a chick falls from its nest, and Bearded Seals, who cruise this fjord. In the afternoon we sail to Ny Ålesund, the world's most northerly settlement.

Once a mining village - served by the world's most northerly railway, which can still be seen - Ny Ålesund is now a research centre. Close to the village is a breeding ground for Barnacle Geese, Pink-footed Geese and Arctic Terns. Visitors interested in the history of Arctic exploration will want to walk to the anchoring mast used by Amundsen and Nobile in the airship *Norge* in 1926 and Nobile in the airship *Italia* in 1928 before their flights to the North Pole.

Day 3 - Near the mouth of Liefdefjorden, we will go ashore for a walk on the tundra island of Andøya. Many common eiders and pink-footed geese nest here, and the more rare King Eider may also be seen. Sailing into Liefdefjorden, we will cruise near the face of the impressive Monaco Glacier. The waters of the glacier front are a favourite feeding spot for thousands of kittiwakes and occasionally polar bears are seen on the glacier.

Day 4 - Today we will reach our northernmost point at Phippsøya, in the Seven Islands north of Nordaustlandet. Here we will be at 81 degrees north, just 540 miles from the geographic North Pole. Polar bears inhabit this region, along with ivory gulls. We may sit for several hours in the pack ice, taking in our spectacular surroundings and seeing a Ross gull, before we turn south again.

Day 5 - We will visit Laagøya today, a low island with a big lagoon where a big herd of Walrus tends to congregate. Sabine's Gulls nest on the island as well. At Sorg Fjord we may find another herd of walrus not far from the graves of 17th century whalers. On a nature walk, we may encounter families of ptarmigans.

Day 6 - Today we will sail into Hinlopen Strait, home to Bearded Seals, Ringed Seals, Polar Bears, and Ivory Gulls. We'll navigate the ice floes of Lomfjordshalvøya in our zodiacs and explore the bird cliffs of Alkefjellet with thousands of Brünnich's guillemots. On the east side of Hinlopenstrait, we'll attempt a landing at Augustabukta on Nordaustlandet, home to Reindeer, Pink-footed Geese, breeding Ivory Gulls, and Walrus. Near Torrelneset, we will explore the polar desert of Nordaustlandet, next to the world's third largest ice cap, which meets the sea nearby. We will walk along beautiful coastline covered in smooth rocks, sculpted by the surf over thousands of years. We may encounter walrus along the way.

Day 7 - In Freemansundet we plan to land at Sundneset on the island of Barentsøya to visit an old trapper's hut and then take a brisk walk across the tundra in search of Spitsbergen Reindeer and Barnacle Geese. Later we cruise south to Diskobukta on the west side of Edgeøya. After a Zodiac cruise through the shallow bay, we land on a beach littered with whale bones and tree trunks, which have drifted here from Siberia. We can also climb to the rim of a narrow gully which is inhabited by thousands of Kittiwakes, together with Black Guillemots and piratical Glaucous Gulls. During the breeding season, the base of the cliffs is patrolled by Arctic Foxes and Polar Bears, especially females with young cubs, searching for young birds that have fallen from the nesting ledges.

Day 8 - In the early morning we cruise quietly along Stellingfjellet the biggest colony with Brunnich's Guillemots in Spitsbergen. In this time of the year the young birds jump from the ledges to the sea in order to start their autumn migration. We make a landing in Hambergbukta at the north side and have a good view on the receding glacier still connecting Sørkap Land with mainland Spitsbergen. Later we cruise in Isbukta a fantastic semi-circular glacier front with very good chances for Bearded Seals and Polar Bears

Day 9 - At Bear Island we visit the remains of a whaling station active from 1905-1908 in Kvalrossbukta. Arctic Skuas and Great Skuas can be seen during a walk across the desolate hills and tundra. The weather will decide whether we then sail along the west coast, where we can observe one of the largest seabird colonies in the North Atlantic teeming with Little Auks, Brunnich's Guillemots, Common Guillemots and Kittiwakes. Alternatively we will sail along the east coast to visit Tunheim, an abandoned mining settlement.

Day 10 - At sea

We will sail through a very good area for observing different species of whales.

Day 11 – Kirkenes. Disembarkation in the morning for the flights to Oslo.

Franz Josef Land 2012

All itineraries are for guidance only. Programs may vary depending on local ice and weather conditions and in order to take advantage of opportunities to see wildlife. Flexibility is paramount for expedition cruises.

Franz Josef Land

O TL11

Aug 09 – Aug 21

12 nights

Kirkenes – Murmansk/Kirkenes
aboard Ortelius

Map to follow

Day 1 (Aug 09) - Afternoon. Embark ship in Kirkenes (16.00 hours)

Day 2 - Early Morning clearing position at anchor near Murmansk

Day 3 & 4 - At sea

Day 5 - We make a landing on Bell Island, near Eira Lodge, the station of Leigh Smith. Then we sail to Cape Flora on Northbrook Island is an important site in the history of Polar exploration, where a century ago, several expeditions had their base. On the cliffs behind Cape Flora, there are large colonies of Brunnich's Guillemots. It is an exciting view to witness the young birds when they try to glide from the ledges to the sea and where they are often eaten by Glaucous Gulls. In Günther Bay at Northbrook Island we make a zodiac cruise near an important haul-out place for Walruses.

Day 6 - Rubini Rock in Tichaia Bay on Hooker Island has colonies of cliff-nesting seabirds like Brunnich's Guillemots, Black Guillemots, Little Auks, Fulmars and Kittiwakes. We should also see Bearded and Harp Seals. We shall also visit the Sedov Research station. Encounters with Polar Bears are likely and also Greenland Whales have been seen in this area.

Day 7 - If sea ice conditions allow in the British Channel, we shall try to sail to Cape Norvegia on Jackson Island, where Nansen and Johansen spent the winter after they had left their ship, "Fram".

Day 8 - If sea ice conditions are very light we will sail to Rudolf Island, the northernmost island of the archipelago or Apollonia Island, another large haul-out for walruses. Alternatively we may land at Alexandra Land at an Ivory Gull colony.

Day 9 - Camp Ziegler on Alger Island has remains of polar expeditions from a century ago. The island, in a beautiful setting, is surrounded by mountainous islands with impressive glacier fronts. Krenkl Station on Hayes Island, built around a meteorite crater, is a surrealistic picture against a background of pristine wilderness.

Day 10 - If weather conditions for the home voyage will not be adverse we will try to land in the very early morning at Cape Tegethoff or Wilczek Island in the south, where we again find the remains of the stations of early polar explorers such as the Austrians, Weyprecht and Payer, who first discovered Franz Joseph Land in the 19th century.

Day 11 & 12 - At sea

Day 13 - Morning, debark ship in port Murmansk (bus to Kirkenes)

Franz Josef Land

OTL12

Aug 21 – Sep 01

11 nights

Kirkenes/Murmansk – Murmansk/Kirkenes
aboard Ortelius

Map to follow

Day 1 (Aug 21) - Noon, bus Kirkenes to Murmansk. Embark ship in port Murmansk

Day 2 & 3 - At sea

Day 4 - We make a landing on Bell Island, near Eira Lodge, the station of Leigh Smith. Then we sail to Cape Flora on Northbrook Island is an important site in the history of Polar exploration, where a century ago, several expeditions had their base. On the cliffs behind Cape Flora, there are large colonies of Brünnich's Guillemots. It is an exciting view to witness the young birds when they try to glide from the ledges to the sea and where they are often eaten by Glacous Gulls. In Günther Bay at Northbrook Island we make a zodiac cruise near an important haul-out place for Walruses.

Day 5 - Rubini Rock in Tichaia Bay on Hooker Island has colonies of cliff-nesting seabirds like Brünnich's Guillemots, Black Guillemots, Little Auks, Fulmars and Kittiwakes. We should also see Bearded and Harp Seals. We shall also visit the Sedov Research station. Encounters with Polar Bears are likely and also Greenland Whales have been seen in this area.

Day 6 - If sea ice conditions allow in the British Channel, we shall try to sail to Cape Norvegia on Jackson Island, where Nansen and Johansen spent the winter after they had left their ship, "Fram".

Day 7 - If sea ice conditions are very light we will sail to Rudolf Island, the northernmost island of the archipelago or Apollonia Island, another large haul-out for walruses.
Alternatively we may land at Alexandra Land at an Ivory Gull colony.

Day 8 - Camp Ziegler on Alger Island has remains of polar expeditions from a century ago. The island, in a beautiful setting, is surrounded by mountainous islands with impressive glacier fronts. Krenkl Station on Hayes Island, built around a meteorite crater, is a surrealistic picture against a background of pristine wilderness.

Day 9 - If weather conditions for the home voyage will not be adverse we will try to land in the very early morning at Cape Tegethoff or Wilchzek Island in the south, where we again find the remains of the stations of early polar explorers such as the Austrians, Weyprecht and Payer, who first discovered Franz Joseph Land in the 19th century.

Day 10 & 11 - At sea

Day 12 - Morning, debark ship in port Murmansk (bus to Kirkenes)

Greenland 2012

All itineraries are for guidance only. Programs may vary depending on local ice and weather conditions and in order to take advantage of opportunities to see wildlife. Flexibility is paramount for expedition cruises.

Northeast Greenland

ATD12

Aug 15 – Aug 27

12 nights

Longyearbyen – Akureyri

PLA13 B K

Aug 26 – Sep 07

12 nights

aboard Antarctic Dream
aboard Plancius



Day 1 - Arrive in Longyearbyen, on Spitsbergen, the administrative capital of the Spitsbergen archipelago of which West Spitsbergen is the largest island. Before embarking there is an opportunity to visit this former mining village. The Parish Church and the Polar Museum are well worth visiting. In the early evening the ship will sail out of Isfjorden.

Day 2 - We sail into Raudfjord on the north coast of West Spitsbergen, a beautiful fjord with spectacular glaciers. It is home to Ringed and Bearded Seals, seabird colonies and a surprisingly rich vegetation. We have good chances to see Polar Bears, for instance near Hamilton Glacier, or more to the head of the fjord. From there we continue to Moffen Island on which Walrus haul out.

Day 3 & 4 - At sea, on our way to Greenland, we may see the edge of the East Greenland sea-ice. We keep watch for whales, and also for migrating seabirds.

Day 5 - Approaching Greenland we will attempt to sail through the sea ice into Foster Bugt, making our first landing at Myggebugtten. Beyond the old hunters' hut (in the first half of last century Norwegian trappers hunted

here for Polar Bears and Arctic Foxes) there is an extensive tundra populated by Musk Oxen. The small lakes are home to geese. We sail through Kaiser Franz Joseph Fjord, a magnificent fjord with towering mountains on both sides, its inner reaches choked with huge icebergs. An alternative is Sofia Sund, which is much narrower, and where we can see Musk Oxen from the ship.

Day 6 - We will land at Blomster Bugt to view the beautiful geological formations. Arctic Hares are usually seen here, and there is a lake with Great Northern Divers and their young. In the afternoon we sail along Teufelschloss and Ella Ø and may land at a beautiful spot in the early evening.

Day 7 - The first half of the day we spend in Antarcticahavn, a wide and extensive valley where we also could see groups of Musk Oxen. At this time of year the autumnal colours of the sparse vegetation make the landscapes even more beautiful.

Day 8 - Today we reach the Scoresby Sund and sail in the morning along the ragged and glaciated Volquart Boons Here we may organise a zodiac cruise along one of the glacier fronts of this coast, and have our first landing near for instance Maane Glacier. Later we land on Danmark,Ø where we find the remains of an Inuit settlement abandoned around 200 years ago. The circular 'tent rings' of stones indicate the summer houses, while the winter houses can be seen closer to a small cape. The sites are excellently preserved, allowing entrances and even bear-proof meat caches to be identified. There are also grave sites. In the evening we continue our sailing through the beautiful fjords to the west, choked with ice-bergs.

Day 9 - We go ashore at Cape Hofmann Halvø, a reliable spot for viewing Musk Oxen. We may also spot Rock Ptarmigans and Great Northern Divers at sea. The landscape here is particularly beautiful, especially during autumn when the Dwarf Willow and Dwarf Birch change colour. Arctic Blueberry and Crowberry add their own colourful touch - the berries are tasty too! In the evening we sail through the fjord towards Scoresby Land, enjoying the contrast between the warm autumnal colours of the vegetation on shore, backed by huge dark mountains, and the cold blue of the icebergs.

Day 10 - In Northwest fjord in Scoresby Land in the morning, we encounter huge icebergs, some over 100m high and more than a kilometre in length. Most of the bergs are grounded as the fjord is only about 400m deep here. We land near Sydkap to view the remains of the Thule culture winter houses. As many as 20 people lived in these tiny houses, hunting Greenland Whales and using their vertebrae to build the houses. We may also land at Gurreholm on Jameson Land. The landscape here is gently undulating.

Day 11 - In the morning we land at Illoqqortoormiut, the biggest settlement in the Scoresby Sund with about 500 inhabitants. At the post office you can buy stamps for your postcards, or just wander around to see the sledge dogs and the drying skins of Seal, Musk Ox and Polar Bear. After dinner we will sail south passing the amazing landscape of the Blossville Coast

Day 12 - We will spend the whole day at sea and we will have splendid opportunities to see large whales and seabird migration and, in the night, the Aurora Borealis (Northern Lights).

Day 13 - In the morning we arrive in Akureyri and are taken by a chartered bus during a 6 hours drive through North Iceland to our hotels in Reykjavik.

Northeast Greenland – North Spitsbergen

ATD13

Aug 27 - Sep 08

12 nights

Akureyri - Longyearbyen
aboard Antarctic Dream



Day 1 - In the afternoon we arrive in Akureyri after a 6 hours drive through North Iceland from our hotels in Reykjavik.

Day 2 - We will spend the whole day at sea and we will have splendid opportunities to see large whales and seabird migration and, in the night, the Aurora Borealis (Northern Lights).

Day 3 - Today we reach the Scoresby Sund and sail in the morning along the ragged and glaciated Volquart Boons Here we may organise a zodiac cruise along one of the glacier fronts of this coast, and have our first landing near for instance Maane Glacier. Later we land on Danmark,Ø where we find the remains of an Inuit settlement abandoned around 200 years ago. The circular 'tent rings' of stones indicate the summer houses, while the winter houses can be seen closer to a small cape. The sites are excellently preserved, allowing entrances and even bear-proof meat caches to be identified. There are also grave sites. In the evening we continue our sailing through the beautiful fjords to the west, choked with ice-bergs.

Day 4 - We go ashore at Cape Hofmann Halvø, a reliable spot for viewing Musk Oxen. We may also spot Rock Ptarmigans and Great Northern Divers at sea. The landscape here is particularly beautiful, especially during autumn when the Dwarf Willow and Dwarf Birch change colour. Arctic Blueberry and Crowberry add their own colourful touch - the berries are tasty too! In the evening we sail through the fjord towards Scoresby Land, enjoying the contrast between the warm autumnal colours of the vegetation on shore, backed by huge dark mountains, and the cold blue of the icebergs.

Day 5 - In Northwest fjord in Scoresby Land in the morning, we encounter huge icebergs, some over 100m high and more than a kilometre in length. Most of the bergs are grounded as the fjord is only about 400m deep here. We land near Sydkap to view the remains of the Thule culture winter houses. As many as 20 people lived in these tiny houses, hunting Greenland Whales and using their vertebrae to build the houses. We may also land at Gurreholm on Jameson Land. The landscape here is gently undulating.

Day 6 - In the morning we land at Illoqqortoormiut, the biggest settlement in the Scoresby Sund with about 500 inhabitants. At the post office you can buy stamps for your postcards, or just wander around to see the sledge dogs and the drying skins of Seal, Musk Ox and Polar Bear. After dinner we will sail south passing the amazing landscape of the Blossville Coast

Day 7 - Today we land in Antarticahavn, a wide and extensive valley where we also could see groups of Musk Oxen. At this time of year the autumnal colours of the sparse vegetation make the landscapes even more beautiful.

Day 8 - In the morning we sail along Teufelschloss and Ella Ø. We will land at Blomster Bugt to view the beautiful geological formations. Arctic Hares are usually seen here, and there is a lake with Great Northern Divers and their young.

Day 9 - We sail through Kaiser Franz Joseph Fjord, a magnificent fjord with towering mountains on both sides, its inner reaches choked with huge icebergs. An alternative is Sofia Sund, which is much narrower, and where we can see Musk Oxen from the ship. We may have a last landing at Myggebogten. Beyond the old hunters' hut (in the first half of last century Norwegian trappers hunted here for Polar Bears and Arctic Foxes) there is an extensive tundra populated by Musk Oxen. The small lakes are home to geese.

Day 10 & 11 - At sea, on our way to Spitsbergen, we may see the edge of the East Greenland sea-ice. We keep watch for whales, and also for migrating seabirds.

Day 12 - We sail into Raudfjord on the north coast of West Spitsbergen, a beautiful fjord with spectacular glaciers. It is home to Ringed and Bearded Seals, seabird colonies and a surprisingly rich vegetation. We have good chances to see Polar Bears, for instance near Hamilton Glacier, or more to the head of the fjord. From there we continue to Moffen Island on which Walrus haul out.

Day 13 - Arrive in Longyearbyen, on Spitsbergen, the administrative capital of the Spitsbergen archipelago of which West Spitsbergen is the largest island. Before embarking there is an opportunity to visit this former mining village. The Parish Church and the Polar Museum are well worth visiting. In the early evening the ship will sail out of Isfjorden.



Day 1 - Arrive in Longyearbyen, on Spitsbergen, the administrative capital of the Spitsbergen archipelago of which West Spitsbergen is the largest island. Before embarking there is an opportunity to visit this former mining village. The Parish Church and the Polar Museum are well worth visiting. In the early evening the ship will sail out of Isfjorden.

Day 2 & 3 - At sea, on our way to Greenland, we may see the edge of the East Greenland sea-ice. We keep watch for whales, and also for migrating seabirds.

Day 4 - We land in Antarticahavn, a wide and extensive valley where we also could see groups of Musk Oxen. At this time of year the autumnal colours of the sparse vegetation make the landscapes even more beautiful.

Day 5 - Today we reach the Scoresby Sund and sail in the morning along the ragged and glaciated Volquart Boons Here we may organise a zodiac cruise along one of the glacier fronts of this coast, and have our first landing near for instance Maane Glacier. Later we land on Danmark, Ø where we find the remains of an Inuit settlement abandoned around 200 years ago. The circular 'tent rings' of stones indicate the summer houses, while the winter houses can be seen closer to a small cape. The sites are excellently

preserved, allowing entrances and even bear-proof meat caches to be identified. There are also grave sites. In the evening we continue our sailing through the beautiful fjords to the west, choked with ice-bergs.

Day 6 - We go ashore at Cape Hofmann Halvø, a reliable spot for viewing Musk Oxen. We may also spot Rock Ptarmigans and Great Northern Divers at sea. The landscape here is particularly beautiful, especially during autumn when the Dwarf Willow and Dwarf Birch change colour. Arctic Blueberry and Crowberry add their own colourful touch - the berries are tasty too! In the evening we sail through the fjord towards Scoresby Land, enjoying the contrast between the warm autumnal colours of the vegetation on shore, backed by huge dark mountains, and the cold blue of the icebergs.

Day 7 - In Northwest fjord in Scoresby Land in the morning, we encounter huge icebergs, some over 100m high and more than a kilometre in length. Most of the bergs are grounded as the fjord is only about 400m deep here. We land near Sydkap to view the remains of the Thule culture winter houses. As many as 20 people lived in these tiny houses, hunting Greenland Whales and using their vertebrae to build the houses. We may also land at Gurreholm on Jameson Land. The landscape here is gently undulating.

Day 8 - In the afternoon we land at Illoqqortoormiut, the biggest settlement in the Scoresby Sund with about 500 inhabitants. At the post office you can buy stamps for your postcards, or just wander around to see the sledge dogs and the drying skins of Seal, Musk Ox and Polar Bear. In the evening we will sail south passing the amazing landscape of the Blosseville Coast

Day 9 - We will spend the whole day at sea and we will have splendid opportunities to see large whales and seabird migration and, in the night, the Aurora Borealis (Northern Lights).

Day 10 - In the morning we arrive in Akureyri and are taken by a chartered bus during a 6 hours drive through North Iceland to our hotels in Reykjavik.

N.B.

The chances that the sea-ice will allow us to sail into the Kaiser Franz Josef Fjord and Scoresby Sund in September (based on experiences from 1992 until 2010) is about 90 %. In case we can not sail into the Scoresby Sund we will resort to a program in the East Greenland fjords more to the south.

INTRODUCTION

S/V Noorderlicht Sailing Cruises 2012 Spitsbergen and Lofoten

All itineraries are for guidance only. Programs may vary depending on local ice and weather conditions and in order to take advantage of opportunities to see wildlife. Flexibility is paramount for expedition cruises.

s/v 'Noorderlicht'

The sailing expeditions in Spitsbergen and Norway will be carried out by the two-mast sailing vessel Noorderlicht. The ship was built in 1910, in Flensburg. For most of her life she served as a light vessel on the Baltic. Then, in 1991 the present owners purchased the ship and re-rigged and re-fitted her thoroughly, according to the rules of 'Register Holland'. Noorderlicht is 46 metres long and 6.5 metres breadth. She is a well-balanced, two-masted schooner rig that is able to sail all seas.

Below deck the ship has a saloon, while in the deckhouse there is a cosy settee from which passengers can view the outside in comfort. All 10 double cabins have hot and cold running water, a cupboard and single berths. The ship has four showers and five toilets. The galley has been equipped with a microwave and a dishwasher. The ship is both well insulated and centrally heated.

Crew and passengers

Noorderlicht is crewed by three expert Dutch sailors, a chef and an expedition leader who has a thorough knowledge of the area. Though the crew is in charge during sailing - they will bring us ashore - the assistance of the passengers is appreciated in handling the sails and taking the helm. Duties can also include being on watch during night sailing. On board there will be a maximum of 20 passengers of different nationalities. The main language will be English.

North Spitsbergen

N0005	Jun 10 – Jun 21	11 nights	Longyearbyen - Longyearbyen aboard Noorderlicht
N0006	Jun 21 – Jul 02	11 nights	aboard Noorderlicht
N0007	Jul 02 – Jul 13	11 nights	aboard Noorderlicht

Day 1 - After arriving in Longyearbyen, the 'capital' (actually the administrative centre) of Spitsbergen, you may wish to visit the Svalbard Museum which has an interesting collection on the history of Spitsbergen, the mining industry and polar exploration. In the afternoon we sail, setting course for Alkhornet, a seabird cliff with a large colony of Kittiwakes. Below the cliffs is a den with Arctic Foxes which scavenge off fallen eggs and chicks. We continue to Tryghamna to visit the remains of a 17th century English whaling station and an 18th century Russian Pomor station.

Day 2 - We leave Tryghamna early in the morning and sail through the Forlandsundet. Weather permitting we will go ashore at Fuglehuken where the first Western Europeans (the expedition of Willem Barentsz) set foot on Spitsbergen. Here we can see the graves of whalers and visit colonies of Common Guillemots, Brünnich's Guillemots, Little Auks and Kittiwakes. Nearby we may be able to visit a haul-out of Harbour Seals and Walruses.

Day 3 - Today we will visit Ny Ålesund, the northernmost permanently inhabited village in the world, a centre for polar research and a former starting point for many North Pole expeditions (Amundsen and Nobile for example). The local bird life has adapted itself to the human presence and is exceptionally tame. Barnacle Geese, Pink-footed Geese, Common Eiders, Arctic Terns and several species of wader can be seen at close quarters. The Reindeers here are smaller than their mainland relatives and do not form large herds.

Day 4 - In the morning we sail from Ny Ålesund to the 14th July Glacier where we cruise in zodiacs. Not far from the glacier we will visit an accessible breeding site for Brünnich's Guillemots, Auks and Puffins. The guano of these bird colonies, the southward exposure and the sheltered situation, give rise to a relatively rich vegetation with many species of flowering plants.

Day 5 - Sailing northwards we visit the Magdalenafjord, one of the most beautiful places on Spitsbergen, with many impressive glacier fronts. During a shore visit we will view the remains of 17th century English whaling activities. We can also visit some big seabird colonies particularly noteworthy for their Little Auks.

Day 6 - Today we will try to visit Ytre Norskøya, a small island which was used for many years as a lookout point for Dutch whalers. There we can still follow their tracks to the summit of the island, passing excellent bird cliffs on the way. On shore the remains of 17th century blubber ovens can be found, while Arctic Skuas and Common Eiders breed among the graves of 200 Dutch whalers.

Day 7 - Raudfjord on the north coast of Spitsbergen is a beautiful fjord with spectacular glaciers. It is also a favourite with Ringed and Bearded Seals, has good seabird colonies, and offers good chances for spotting Polar Bear and Belugas. Jermaktangen, at the fjord's eastern entrance, is a geography lesson in the erosion of the land by the sea.

Day 8 - If sea-ice conditions allow, we may land on the northern-side of Reindyrfla, the largest tundra area of Spitsbergen. The vast undulating plain is a good grazing area for Reindeer and several species of waders also breed here. The area's lakes offer good chances of spotting Red-throated Divers and King Eiders.

Day 9 - Today we visit the remains of Smeerenburg, the largest 17th century whaling settlement on Spitsbergen, and, if we obtain permission, Danskøya where many historical remains are to be found of the 19th century expedition by the Swedish explorer Andree, who tried to reach the North Pole in a balloon.

Day 10 & 11 - On our way south, we will try to make a landing on the coast of the Forlandsundet at Engelsbukta or Sarstangen or Poolepynten, where Walruses are often hauled out.

From there we head straight for Longyearbyen, but if time allows we could call at Colesbukta, from where good walkers may walk to Longyearbyen in six hours.

Day 12 - Departure by scheduled flight from Longyearbyen to Oslo.

Around Spitsbergen

			Longyearbyen - Longyearbyen
N0008	Jul 13 – Jul 28	15 nights	aboard Noorderlicht
N0009	Jul 28 – Aug 12	15 nights	aboard Noorderlicht
N0010	Aug 12 – Aug 27	15 nights	aboard Noorderlicht
N0011	Aug 27 – Sep 11	15 nights	aboard Noorderlicht

Day 1 - After arriving in Longyearbyen, the 'capital' (actually the administrative centre) of Spitsbergen, you may wish to visit the Svalbard Museum which has an interesting collection on the history of Spitsbergen, the mining industry and polar exploration. In the afternoon we sail, setting course for Alkhornet, a seabird cliff with a large colony of Kittiwakes. Below the cliffs is a den with Arctic Foxes which scavenge off fallen eggs and chicks. We continue to Trygghamna to visit the remains of a 17th century English whaling station and an 18th century Russian Pomor station.

Day 2 - We leave Trygghamna early in the morning and sail through the Forlandsundet. Weather permitting we will go ashore at Fuglehuken where the first Western Europeans (the expedition of Willem Barentsz) set foot on Spitsbergen. Here we can see the graves of whalers and visit colonies of Common Guillemots, Brünnich's Guillemots, Little Auks and Kittiwakes. Nearby we may be able to visit a haul-out of Harbour Seals and Walruses.

Day 3 - Today we visit the remains of Smeerenburg, the largest 17th century whaling settlement on Spitsbergen. We also land on Ytre Norskøya where there are many graves dating from whaling days.

Day 4-15 - Today we sail either to Sorgfjord, where we have a good chance of seeing Walruses, or to Murchison Bay, on the north side of which there is an extensive dry tundra, home to many Reindeer. There is also a Swedish research station here. As we continue through Hinlopen Strait we are surrounded by icecaps. We will land in Lomfjord, a beautiful fjord surrounded by high mountains. Augustabukta is a lovely bay close to a glacier which is crevasse-free, allowing us to walk without difficulties. On a nearby cliff the rare and beautiful Ivory Gull nests, together with Black Guillemots. Reindeer, Polar Bears and Walruses are usually seen in this area.

We next sail towards the impressive Brasvell glacier. We may take an excursion on Svartknausflya, a desolate polar desert almost devoid of vegetation, or visit Wilhelmøya, which has raised beaches littered with sub fossilised whale skeletons, and where encounters with Polar Bears are likely. Sailing through the narrow Heleysundet between Spitsbergen and Barentsøya can only be done against the current, a very spectacular journey.

As an alternative if conditions do not favour us we will sail through Freemansundet. At Kapp Lee, we walk in beautiful Rosenbergdalen to see Reindeer. For walkers it is great hike from here to Diskobukta. In Diskobukta we visit a large colony of Kittiwakes which nest in a canyon. Arctic Foxes and Polar Bears with young, often roam through the canyon, scavenging on young, flightless birds which fall from the ledges. On the raised beaches there are many sub fossilised whale skeletons.

Kong Ludvigøyane is a breeding place for Walruses. On the islands there are also many remains of the whaling, Walrus and Polar Bear hunting periods. Close encounters with Polar Bears are virtually guaranteed here. Continuing our exploration of southern Spitsbergen, we sail into the labyrinth of side fjords in Hornsund. Behind Brepollen, a large glacial deposit at the head of the fjord, we will sail along a beautiful glacier front with good chances of seeing Bearded Seals and Polar Bears.

The geological formations in this area are very spectacular and colourful. We will also pay a visit to the Polish research station at Isbjørnhamna, where the friendly crew will discuss their scientific programs.

On our way to Longyearbyen we sail into Bell Sund to reach Ahlstrandhalvøya, with its interesting geological formations and the remains of the 20th century Beluga hunting. It is still a good area for observing Belugas. If time allows we will pay a visit to Barentsburg, the only inhabited Russian settlement in Spitsbergen, or to Colesbukta, an abandoned Russian coal mining settlement.

Day 16 - Departure by scheduled flight from Longyearbyen to Oslo.

N.B. The chances that we can complete a full Spitsbergen Circumnavigation (based on our experiences from 1992 until 2010) are about, 30 % in the first half of July, 60 % in the second half of July, 90% in the first half of August, 95% in the second half of August. In case we can not complete a full circumnavigation we will mostly resort to a program in Northeast or Southeast Spitsbergen

North Spitsbergen

NOO12

Sep 11 – Sep 21

10 nights

Longyearbyen - Longyearbyen
aboard Noorderlicht

Day 1 - After arriving in Longyearbyen, the 'capital' (actually the administrative centre) of Spitsbergen, you may wish to visit the Svalbard Museum which has an interesting collection on the history of Spitsbergen, the mining industry and polar exploration. In the afternoon we sail, setting course for Alkhornet. Below the cliffs we see often Arctic Foxes and Reindeer. We continue to Trygghamna to visit the remains of a 17th century English whaling station and an 18th century Russian Pomor station.

Day 2 - We leave Trygghamna early in the morning and sail through the Forlandsundet. Weather permitting we will go ashore at Fuglehuken where the first Western Europeans (the expedition of Willem Barentsz) set foot on Spitsbergen. Here we can see the graves of whalers and remains of the Polar Bear hunt era. Nearby we may be able to visit a haul-out of Harbour Seals and Walruses.

Day 3 - Today we will visit Ny Ålesund, the northernmost permanently inhabited village in the world, a centre for polar research and a former starting point for many North Pole expeditions (Amundsen and Nobile for example). The local bird life has adapted itself to the human presence and is exceptionally tame. The Reindeers here are smaller than their mainland relatives and do not form large herds.

Day 4 - Sailing northwards we visit the Magdalenafjord, one of the most beautiful places on Spitsbergen, with many impressive glacier fronts. During a shore visit we will view the remains of 17th century English whaling activities. We can also visit some big seabird colonies particularly noteworthy for their Little Auks.

Day 5 - Today we will try to visit Ytre Norskøya, a small island which was used for many years as a lookout point for Dutch whalers. There we can still follow their tracks to the summit of the island, passing excellent bird cliffs on the way. On shore the remains of 17th century blubber ovens can be found, while Arctic Skuas and Common Eiders breed among the graves of 200 Dutch whalers.

Day 6 - Raudfjord on the north coast of Spitsbergen is a beautiful fjord with spectacular glaciers. It is also a favourite with Ringed and Bearded Seals, has good seabird colonies, and offers good chances for spotting Polar Bear and Belugas. Jermaktangen, at the fjord's eastern entrance, is a geography lesson in the erosion of the land by the sea.

Day 7 - After 15 September we have the unique opportunity to land on the island of Moffen an important haul out place for Walrus.

We see the extensive killing fields where those animals were slaughtered in previous centuries for their tusks.

Day 8 - Today we visit the remains of Smeerenburg, the largest 17th century whaling settlement on Spitsbergen, and, if we obtain permission, Danskøya where many historical remains are to be found of the 19th century expedition by the Swedish explorer Andree, who tried to reach the North Pole in a balloon.

Day 9 & 10 - On our way south, we will try to make a landing on the coast of the Forlandsundet at Engelsbukta or Sarstangen or Poolepynten, where Walrus are often hauled out. From there we head straight for Longyearbyen.

Day 11 - Departure by scheduled flight from Longyearbyen to Oslo.

South Spitsbergen – Aurora Borealis

NOO13
NOO15

Sep 21 – Sep 28
Oct 05 – Oct 12

07 nights
07 nights

Longyearbyen – Longyearbyen
aboard Noorderlicht
aboard Noorderlicht



Day 1 - After arriving in Longyearbyen, the ‘capital’ (actually the administrative centre) of Spitsbergen, you may wish to visit the Svalbard Museum which has an interesting collection on the history of Spitsbergen, the mining industry and polar exploration. In the afternoon we sail, setting course for Alkhorneret, a high cliff. Below the cliffs we often see Arctic Foxes and Reindeer. We continue to Trygghamna to visit the remains of a 17th century English whaling station and an 18th century Russian Pomor station.

Day 2 – 5 - We leave Trygghamna early in the morning and sail to the north side of Bell Sund. Bell Sund is a fjord system with two major branches (Van Mijenfjord, Van Keulenfjord) and one smaller side bay (Recherchefjord). The geology is fascinating and has created amazing landscapes, such as the long, narrow island of Akseloya that blocks Van Mijenfjord almost completely. In Fridtjofhamna, the calving glacier Fridtjofbreen is surrounded by picturesque mountains. The rich wildlife of the area has attracted hunters throughout several centuries - we will walk in their footsteps and see remains of their huts, for example at Ahlstrandhalvoya. Recherchefjord is one of the places in Spitsbergen with the highest concentration of historical sites, dating back to 17th century whalers and the mining period of the early 20th century. The glacier Recherchebreen ends at a lagoon, likely to be

frozen in October, with many smaller icebergs. Polar bears are likely to be present anywhere in the Bellsund area, and we will keep our eyes open to find them. We have also seen Belugas (White whales) in this area.

Day 6 - We will pay a visit to Barentsburg, the only inhabited Russian settlement in Spitsbergen, or to Colesbukta, an abandoned Russian coal mining settlement.

Day 7 - We sail into the inner reaches of the Isfjord system, where during nights with open sky we will experience temperatures of minus 10 degrees C, and new ice will be forming on the heads of the fjords.

Day 8 - Departure by scheduled flight from Longyearbyen to Oslo.

These October Spitsbergen voyages, at the onset of winter, are ideal for observing the splendid Aurora Borealis (Northern Lights).

North Spitsbergen – Aurora Borealis

NOO14

Sep 26 - Oct 03

07 nights

Longyearbyen - Longyearbyen
aboard Noorderlicht

Day 1 - After arriving in Longyearbyen, the ‘capital’ (actually the administrative centre) of Spitsbergen, you may wish to visit the Svalbard Museum which has an interesting collection on the history of Spitsbergen, the mining industry and polar exploration. In the afternoon we sail, setting course for Alkhorneret. Below the cliffs we see often Arctic Foxes and Reindeer. We continue to Trygghamna to visit the remains of a 17th century English whaling station and an 18th century Russian Pomor station.

Day 2 - We leave Trygghamna early in the morning and sail through the Forlandsundet. Weather permitting we will go ashore at Fuglehuken where the first Western Europeans (the expedition of Willem Barentsz) set foot on Spitsbergen. Here we can see the graves of whalers. Nearby we may be able to visit a haul-out of Harbour Seals and Walruses.

Day 3 – 5 - We will visit Ny Ålesund, the northernmost permanently inhabited village in the world, a centre for polar research and a former starting point for many North Pole expeditions (Amundsen and Nobile for example). The Reindeers here are smaller than their mainland relatives and do not form large herds. At Blomstrandhalvøya we see the remains of a marble mine. This area was a peninsula, but by the retreat of the glaciers it has become an island. A climb to the top of the islands gives a breathtaking view across Kongsfjord with a series of glacier fronts. The 14th July Glacier is another great landscape. Though late in autumn we still will see Eider Ducks, several species of seabirds, waders and Snow Buntings.

Day 6 – 7 - On our way south, we sail into Engelskbukta and St Johnsforden or Sarstangen and Poolepynten, where Walruses are often hauled out. From there we sail into Isfjord where we could make a landing with a walk at Bohemanneset. In the evening we head for Longyearbyen.

Day 8 - Departure by scheduled flight from Longyearbyen to Oslo.

West Spitsbergen - Isfjord– Aurora Borealis

NOO16	Oct 12 – Oct 17	05 nights
NOO17	Oct 17 – Oct 22	05 nights

Longyearbyen – Longyearbyen
 aboard Noorderlicht
 aboard Noorderlicht



Day 1 - After arriving in Longyearbyen, the ‘capital’ (actually the administrative centre) of Spitsbergen, you may wish to visit the Svalbard Museum which has an interesting collection on the history of Spitsbergen, the mining industry and polar exploration. We stay the night in Longyearbyen.

Day 2 - In the early morning we sail, setting course for Alkhornet, a high cliff. Below the cliffs we often see Arctic Foxes and Reindeer. We continue to Trygghamna to visit the remains of a 17th century English whaling station and an 18th century Russian Pomor station.

Day 3 - We leave Trygghamna early in the early morning and pay a visit to Barentsburg, the only inhabited Russian settlement in Spitsbergen. It is interesting to experience how the miners live through the polar winter. There is for instance a swimming pool filled with heated sea water.

Day 4 - We sail into the inner reaches of the Isfjord system to Ekmanfjord along some beautiful glacier fronts, where during nights with open sky we will experience temperatures of minus 10 degrees Celcius. The first new ice

will be forming on the heads of the fjords.

Day 5 - At Kap Thorsden, we could visit the well-preserved Swedish House, built in 1872 by Nordenskiöld, where in 1872-73, 17 winterers died of lead poisoning. Same evening we arrive in Longyearbyen.

Day 6 - Departure by scheduled flight from Longyearbyen to Oslo.

These October Spitsbergen voyages, at the onset of winter, are ideal for observing the splendid Aurora Borealis (Northern Lights).

Lofoten – Aurora Borealis

NOO20

Nov 08 – Nov 15

07 nights

Lødingen – Lødingen

NOO21

Nov 15 – Nov 22

07 nights

aboard Noorderlicht

aboard Noorderlicht



Day 1 - Arrival by public bus in Lødingen. Staying on the sailing-ship "Noorderlicht" in the harbour of Lødingen.

Day 2 - Departure from Lødingen and sailing for the Tysfjord. At noon we land at Musken, a Sami community.

At Musken is the entrance to the deepest cave in Europe. In the evening we arrive at Hellembotn near a deserted summer camp of the Sami.

Day 3 - We will have an extensive excursion in the untouched wilderness area of Hellembotn, where we are close to the Swedish border. There are small chances of seeing some reindeer. Later in the afternoon we sail to Drag, where another Sami community exists. Here we will spend the night.

Day 4 - Morning walk to the Stone Age petroglyphs at Leiknes. Images of animals such as a Killer Whale and Elk have been carved into the hard rock in the hills. In the afternoon we climb the hill at Skarvberget which is an outlook post for Sea Eagles. In the evening we sail to Tranøy to spend the night and may visit the small museum there.

Day 5 - In the morning we walk to the nice lighthouse of Tranøy and admire the works of art that are placed in this small artist's village. Tranøy is known

because of the Norwegian writer and Nobel-prize winner, Knut Hamsun. We sail to the island of Skrova where we arrive late in the afternoon. We stay there for the night. Skrova is a small, rugged island where the 200 inhabitants mainly live from fishery. It is one of the few places in Norway from where whale hunters still hunt for Minke Whales.

Day 6 - Morning walk on Skrova. An easy walk brings us to a nice bay on the other side of the island. The active passengers can climb the 255 meters peak of Skrova for the 360° view. Good chances of Sea Eagles during these walks. In the afternoon we sail for Henningsvæer the Venice of the North. This beautiful historical village was until the beginning of the 20th century a centre for the Lofoten Cod fisheries. Later we sail to Svolveær the biggest town of Lofoten. We stay the night in Svolveær where there is a chance to enjoy the famous Svolveær night-life.

Day 7 - In the morning we sail into the Trollfjord, a famous steep fjord a few hours sailing from Svolveær. Afterwards we head for Tranøy, on the Norwegian mainland, where we stay for the night. With a good wind we sail in the afternoon to Hustadgaard in Vestbygd. Here we will have the opportunity to see the "Øye I Stein", "Eye in Stone", a sculpture of 37 tons made by the Indian artist Anish Kapoor. Then we have to head for Lødingen again. Arrival in Lødingen late in the evening and staying there for the night.

Day 8 - Disembarkation from the Noorderlicht in the morning, public bus to the airport.

The Lofoten voyages take place in late autumn, when the days are short in Northern Norway. We can expect the first snow showers, and sometimes temperatures just above freezing. The autumn colours will be beautiful during the day time. At night, when there is open sky we may be able to admire the Aurora Borealis (Northern Lights). The Lofoten voyages are very dependent on the weather, which can be quite rough. Therefore the outline of the voyage, given above is just for guidance.

INTRODUCTION

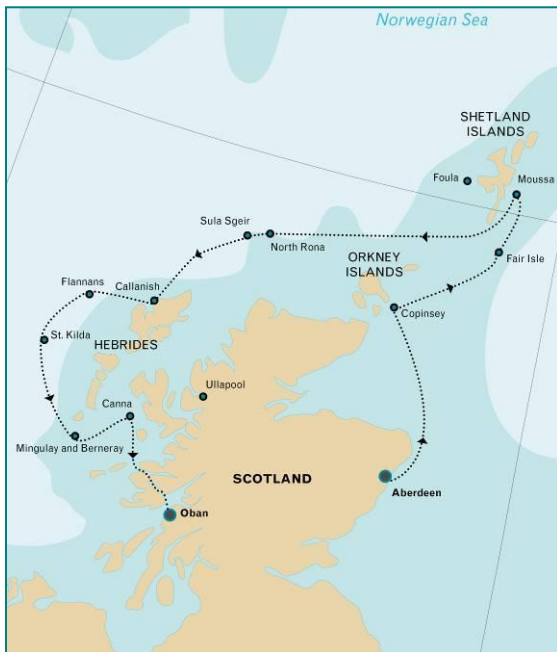
S/V Rembrandt van Rijn Sailing Cruises 2012 West and North Greenland

All itineraries are for guidance only. Programs may vary depending on local ice and weather conditions and in order to take advantage of opportunities to see wildlife. Flexibility is paramount for expedition cruises.

S/V 'Rembrandt Van Rijn' was built as a herring lugger early last century. The vessel was rebuilt as a three-mast passenger sailing schooner in The Netherlands in 1994 and sailed in Spitsbergen (1994 – 1996) and in Galápagos (1998 - 2001). The vessel underwent a complete rebuilding and refurbishment program in 2011. The communication and navigation equipment has been completely revamped according to the latest SOLAS regulations.

Ship details

The Rembrandt van Rijn measures 56 meters in length (168 ft.), 7 meters in width and has a draft of 2, 5 meters. The maximum engine speed is 9 knots. She has an experienced crew of 10 on board including two tour guides. The ship can accommodate a maximum of 34 passengers in 17 twin cabins (1 Twin Shared cabin with porthole (shared shower and toilet), 6 Twin Private Inside cabins (with shower and toilet, no porthole), 10 Twin Private cabins (with shower and toilet and porthole). A spacious restaurant on board the vessel allows all passengers to have their meals at the same time. The vessel furthermore consists of a separate bar including a reading table. The ship is well suited for expedition cruising among small islands and offers good open deck viewing areas, even when under sail. The two inflatable rubber crafts (zodiacs) enable landing and wildlife viewing opportunities in otherwise inaccessible areas.



Day 1 - Arrive in Aberdeen, famed as the granite city and many times a winner of the Britain in Bloom competition, and embark for our trip. The lighthouse on Girdle Ness, to the south as the North Sea is reached, was designed by the grandfather of Robert Louis Stevenson.

Day 2 - Copinsey is a lovely uninhabited nature reserve of the RSPB and rarely visited. More than 1,000 pairs of fulmars nest on Copinsay, which has nearly a mile of vertical cliffs up to 76 metres high. There is a vast seabird colony on the cliffs, with around 20,000 guillemots, 700 razorbills, 600 puffins and about 4,500 pairs of kittiwakes. Black guillemots and shags also nest here and there are great black-backed gull colonies.

Day 3 - At Fair Isle, in the Shetlands, we are welcomed by the 70 or so inhabitants (famed for their knitwear, examples of which we will see) and walk to the bird observatory. Later, on Mousa, one of the smaller Shetland Islands, we visit one of the best preserved brochs in Scotland. Brochs are circular stone towers probably built by the Picts. During a night excursion we watch thousands of Storm Petrels return to their burrows or crevices. By day we view Grey Seals, Black Guillemots, Red-throated Divers, Arctic Skuas and a wonderful spring flora.

Day 4 - Out in the Atlantic to the north-west of Scotland lie the tiny islands of North Rona and Sula Sgeir. We shall land on North Rona to see the seabird colonies and the Grey Seals. The island was inhabited in the 18th century and some remains are still visible: Leach's Petrels can be heard calling from their nesting burrows in the ruined walls of a small church in the 'village'. Sula Sgeir is the last island in Britain on which Gannets are harvested annually. There will be spectacular views of its cliffs as we sail around. In 2006 we saw a Black-browed Albatross at this island.

Day 5 - We visit Lewis to see the prehistoric stone circle of Callanish, one of the finest in Britain with stones over 3m tall. There are several smaller stone circles and chambered cairns on the moorland near Callanish. Later there will be great opportunities to watch and photograph Guillemots, Razorbills and Puffins on the Flannan Islands, a group of small islands to the west of the Outer Hebrides.

Day 6 - To the west of North Uist lie the St Kilda group of islands, built of volcanic rock and with cliffs rising to over 400m, the highest in Britain and home to the largest seabird colony in the country. St Kilda has its own sub-species of birds and mice, and of sheep, the Soay, probably brought here by Stone Age man over 5,000 years ago. Until 1930 St. Kilda was inhabited, but then the last of the islanders left leaving a handful of windswept ruins, though there is also a military base which may be visited.

Day 7 - The small islands of Mingulay, Berneray and Pabay, to the south of South Uist, are a nature reserve with important breeding populations of RazorBills, Guillemots, Black Guillemots, Puffins, Fulmars and Shags. There are also five species of gull, all the seabirds being attracted by the cliffs and caves which offer safe nesting sites. The islands also have significant historical sites, including the old village on Mingulay which the last islanders left in 1912. The islanders were fishermen and collected the seabirds and eggs for food. They also traded the feathers.

If the weather is poor we will sail to Canna, one of the 'Small Isles' of the Inner Hebrides. It has a tiny agricultural and cattle-rearing population. From a walk along the cliff top we may see Golden Eagles, White-tailed Eagles and Peregrine Falcons. At the cliff edge the rare Loose-flowered Orchids grow.

Day 8 - We disembark at Oban, a small and cosy harbour town in west Scotland. From there it is a good option to take the train to Glasgow, a marvellous journey through one of the most scenic parts of Scotland, to join our homeward flights.

The channels between the Scottish islands offer excellent possibilities to spot Minke Whales (a small baleen whale), White-beaked Dolphins and Harbour Porpoises. Several other cetaceans, including Orcas (Killer Whales), are also native to these waters.

West Greenland - Whale Safari

Snowshoeing by boat

RVR05 S

May 24 – May 31

07 nights

Nuuk - Ilulissat

aboard Rembrandt van Rijn



Day 1 - Arrive from Reykjavik to Nuuk airport on a regularly scheduled flight (flight not included in the voyage cost). After embarking the ship, there is enough time to do some individual sightseeing. Nuuk (Godthåb), the capital of Greenland has a population of about 14.000. You could visit the museum which has a remarkable collection of Inuit mummies, dating from the 15th Century, which were found near Uummannaq, further to the north. The Cultural Centre of Nuuk, which has yearly exhibitions of the works of a Greenlandic artist, is also worth visiting. There are historical buildings from colonial times and bookstores with a good collection of books about Greenland. In the evening we set sail to the north. The waters to the west of the town are a good place to see Humpback Whales and Blue Whales.

Day 2 - In Søndre Isortoq at Ivnnarssuaq in the Manitsøq area we visit a large seabird colony with Kittiwakes and Brünnich's Guillemots.

Day 3 - We sail past Manitsøq to reach the fantastic landscapes of the Evighedsfjord. There we visit a large seabird colony at Taaterat (Kittiwake) and sail along the nearby glacier front.

Day 4 - We arrive at Sydbay (Ukivik), where the 18th Century whalers traded with the Eskimo's at the occasion of the yearly Assivik, when people from a large area come together, on a beautiful sandy beach. We land also at nearby Isortoq where remains of houses from the Thule culture can be found. In this area we may also see Reindeer.

Day 5 - The island groups of Hunde Eiland and Kronprinsens Eiland, at the mouth of Disko Bay, are surrounded by rich waters which attract both seabirds and whales. We intend to call at the small settlement on Hunde Eijland where old dwellings of Greenland's Thule culture (dating from the 11th Century) and graves from 18th Century Dutch whalers can be seen. Later we will make Zodiac excursions in the beautiful narrows of the Kronprinsens Eiland archipelago. This day we will have good opportunities to observe foraging Greenland Whales at the mouth of Disko Bay.

Day 6 - Another day of opportunities to see Greenland Whales, when we sail to Disko Island and land at Engelskmandens Havn and Fortunebay near Qeqertarsuaq (Godhavn), where there are warm springs.

Day 7 - Today we find ourselves just south of the large Jakobshavn Glacier with its enormous ice-bergs. We climb the hill at Avangnardlit from where we have a fantastic view across the Jakobshavn Isfjord, which is a World Heritage site. In the evening we sail along the front of the glacier and the ice-bergs to Ilulissat, where we will spend the night.

Day 8 - Ilulissat (5000 inhabitants) is an important West Greenland town, with museums, institutes bookstores, etc. At mid-day we fly from Ilulissat to Reykjavik by chartered plane (flight not included in the voyage cost).

Disko Bay - Whale Safari

RVR06
RVR07
RVR08

May 31 – June 07
June 07 – June 14
June 14 – June 21

07 nights
07 nights
07 nights

Ilulissat - Ilulissat

aboard Rembrandt van Rijn
aboard Rembrandt van Rijn
aboard Rembrandt van Rijn



Day 1 - We arrive in Ilulissat from Reykjavik by chartered plane (flight not included in the voyage cost). Ilulissat (5000 inhabitants) is an important West Greenland town, with museums, institutes, bookstores, etc.

Day 2 - Today we sail along the large Jakobshavn Glacier with its enormous ice-bergs. South of it we climb the hill at Avangnardlit from where we have a fantastic view across the Jakobshavn Isfjord, which is a World Heritage site.

Day 3 - The island groups of Hunde Ejland and Kronprinsens Ejland, in the mouth of Disko Bay, are surrounded by rich waters which attract both seabirds and whales. We intend to call at the small settlement on Hunde Eijland where old dwellings of Greenland's Thule culture (dating from the 11th Century) and graves from 18th Century Dutch whalers can be seen. Later we will make Zodiac excursions in the beautiful narrows of the Kronprinsens Ejland archipelago. This day we will have good opportunities to observe foraging Greenland Whales in the mouth of Disko Bay.

Day 4 - Another day of opportunities to see Greenland Whales, when we sail to Disko Island and land at Engelskmandens Havn and Fortunebay near

Qeqertarsuaq (Godhavn), where there are warm springs.

Day 5 - Today we sail to Flakkerhuk, on the east side of Disko Island, making our way through waters dominated by huge icebergs. We intend to land at several points along the coast, like Narujuk and Modderbugt to observe a population of birds typical to the High Arctic, with species such as Long-tailed Skuas, Turnstones and Grey Phalaropes. The birds breed on a beautiful tundra landscape backed by basalt cliffs. Good walkers may walk to Skansen, where the ship will pick them up from.

Day 6 - At Naajat, on the north side of Oqaatsut, we sail with zodiacs along a Kittiwake colony of more than 10,000 breeding pairs. Near Anitdlagia we have a fine opportunity to land and watch the Kittiwakes from land. At Langebugt we land and make an excursion to a beautiful lake, Eqluernerit Taserssuat.

Day 7 - Sailing through Ata Sund we reach the Eqip Sermia a great glacier front, where the French explorer De Quervain built his station and ascended to the ice-cap. In the evening we sail to Ilulissat.

Day 8 - Ilulissat from where we fly to Reykjavik by chartered plane (flight not included in the voyage cost).

Disko Bay – Umanak

RVR09

June 21 – July 02

11 nights

Ilulissat - Ilulissat

RVR10

July 02 – July 13

11 nights

aboard Rembrandt van Rijn

aboard Rembrandt van Rijn



Day 1 - We arrive in Ilulissat from Reykjavik by chartered plane (flight not included in the voyage cost). Ilulissat (5000 inhabitants) is an important West Greenland town, with museums, institutes, bookstores, etc.

Day 2 - Today we sail along the large Jakobshavn Glacier with its enormous ice-bergs. South of it we climb the hill at Avangnardlit from which we have a fantastic view across the Jakobshavn Isfjord, which is a World Heritage site.

Day 3 - At the north side of Disko Island we land at Kugangup Innarta, a seabird cliff at the east side of a valley with a row of Pingo's (periglacial phenomena), and take a walk into the valley.

Day 4 - At Uummannaq, we approach High Arctic waters. Seal hunting is still an important source of income for the local people and they also have many dogs which haul their sledges in winter. We will also visit the nearby Qilakitsoq site, on the north coast of the Nuussuaq Peninsula, where some years ago a family of mummified Thule culture people from the 15th Century was found.

Day 5 - We sail to Akugdleg with its fantastic geological formations creating a desert like image. Along the west side of Qaqugdlugssuit with a Fulmar colony we reach the huge glacier Sermeq Sikardleg, where we plan a zodiac excursion along the front.

Day 6 - In the settlement of Ukkusigssat, Alfred Wegener, the great German explorer had his base from where he ventured to the Greenlandic ice-cap. Later that day we will land at the head of the fjord, where he began his ascent of the ice-cap. The Scheideck Glacier which 80 years ago ended at the coast has retreated about 10 km inland. In the same area we will see Marmorilik with Black Angel zinc and lead mine high in the mountains.

Day 7 - Sermeq Avangardleg in the Perdlerfiup Kangerdlua is another glacier which has retreated considerably. It is about a half an hour walk before you come to a stunning lake in which ice-bergs drift around and where you see huge ice - grottos.

Day 8 - Today we circumnavigate Upernivik ø and sail through narrow fjords surrounded by mountains of over 2000m and glaciers at all sides. We land in Illorsuit on Ubekendt Ejland, where the American artist Rockwell Kent made his famous painting of Greenlandic life, a century ago.

Day 9 - We land at Schades øer in the mouth of the Karrats Fjord. The mouth of this fjord is a good area for spotting whales. Later we land on the southern tip of Svartenhuk in a valley with low Arctic tundra full of lakes and geese. Muskoxen have been transferred to this area and have adapted very well.

Day 10 - In the early morning we land at Bjørnefaelden, a Norse ruin at the western tip of Nuussuaq Peninsula.

Day 11 - At Naajat, on the north side of Oqaatsut, we sail with zodiacs along a Kittiwake colony of more than 10,000 breeding pairs. Near Antlagia we have a fine opportunity to land and watch the Kittiwakes from land. In the afternoon we sail toward Ilulissat.

Day 12 - Ilulissat from where we fly to Reykjavik by chartered plane (flight not included in the voyage cost).

Disko Bay – Upernavik

Drygalski – Wegener memorial

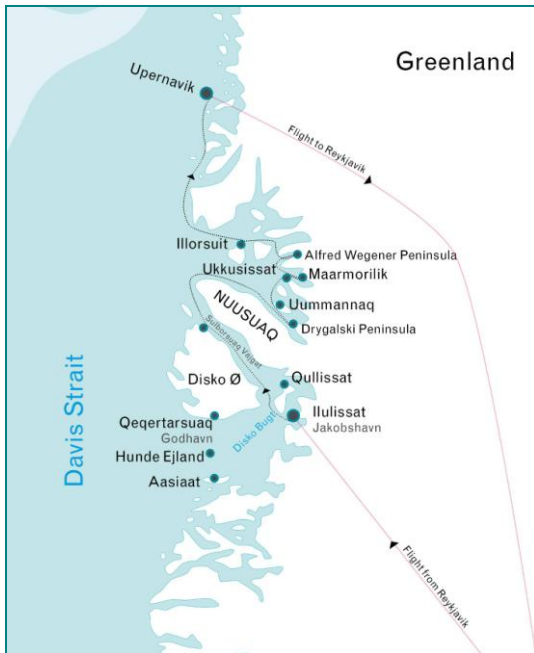
RVR11 G

July 13 – July 23

10 nights

Ilulissat - Upernavik

aboard Rembrandt van Rijn



Day 1 - We arrive in Ilulissat from Reykjavik by chartered plane (flight not included in the voyage cost). Ilulissat (5000 inhabitants) is an important West Greenland town, with museums, institutes, bookstores, etc.

Day 2 - Today we sail along the large Jakobshavn Glacier with its enormous ice-bergs. South of it we climb the hill at Avangnardlit from where we have a fantastic view across the Jakobshavn Isfjord, which is a World Heritage site.

Day 3 - At the north side of Disko Island we land at Kugangup ivnarta, a seabird cliff at the east side of a valley with a row of Pingo's (periglacial phenomena), where we will take a walk into the valley.

Day 4 - At Uummannaq, we approach High Arctic waters. Seal hunting is still an important source of income for the local people and they also have many dogs which haul their sledges in winter. We will also visit the nearby Qilakitsoq site, on the north coast of the Nuussuaq Peninsula, where some years ago a family of mummified Thule culture people from the 15th century was found.

Day 5 - In Karajak Isfjord we see the Karajak Nunatak, where Drygalski did his geographic research and wintered at the end of the 19th Century surrounded by enormous glaciers and ice-bergs.

Day 6 - Through a maze of fjords and straits with huge ice-bergs and among high mountain sides we work our way north looking for opportunities to make a landing at Ukalik or Iliarsuit where remains of Thule culture dwellings can be found.

Day 7 - In the settlement Uvkusigssat, the German explorer Wegener had his base from where he ventured to the Greenlandic ice-cap. Later that day we will land at the head of the fjord, where he began his ascent of the ice-cap. The glacier Scheideck which 80 years ago ended at the coast has retreated about 10 km inland. In the same area we will see Marmorilik with the Black Angel Mine for zinc and lead high in the mountains.

Day 8 - Today we circumnavigate Upernavik ø and sail through narrow fjords surrounded by mountains of over 2000m and glaciers at all sides. We land in Illorsuit on Ubekendt Ejland, where the American Rockwell Kent made his famous painting of Greenlandic life, a century ago.

Day 9 - We reach Svartenhuk Halvø, where we land at Svartenhavn. We will walk on an extensive tundra, dotted with lakes, where we will encounter ducks and geese and Muskoxen. Later we land at Lille Fladø, where a big colony of Arctic Terns and small colonies of Puffins, Black Guillemots and Little Auks survive.

Day 10 - At Agparssuit at the south side of Qaersorssuaq we visit two small colonies of Brünnich Guillemots and on Hvalø a Puffin colony. In these waters we often have seen whales. From there we sail to Upernavik the main town in Northwest Greenland, where we will have an opportunity to experience Greenlandic culture.

Day 11 - Upernavik and return flight to Reykjavik by chartered plane (flight not included in the voyage cost).

North Greenland - *Ultima Thule*

RVR12 G
RVR14

July 23 – Aug 07
Aug 22 – Sep 06

15 nights
15 nights

Upernavik - Upernavik
aboard Rembrandt van Rijn
aboard Rembrandt van Rijn



Day 1 - We arrive in Upernavik from Reykjavik by chartered plane (flight not included in the voyage cost). Upernavik (1500 inhabitants) is the main town in North Greenland, where the people still live from hunting seals.

Day 2 - We will go ashore on Kipak, and Kap Shackleton on Agparsuit which still have huge colonies of Brünnich's Guillemots.

Day 3 - At the southern end of Melville Bugt we land at Kuvdlorssuaq the northernmost settlement of the Upernavik district.

Day 4 - We land at Lille Renland, where Reindeer have been found. Here we can walk on the Greenland ice-cap. In this area we may encounter our first sea ice and, if so, there is a chance of spotting Polar Bears hunting seals at the ice edge. Later we land at Red Head. The coast here is dominated by the vast Greenland ice cap which reaches the sea as a series of enormous glacier fronts, the largest outside Antarctica.

Day 5 - Today we sail to the western side of Melville Bugt, calling at Cape Melville and then continuing into Meteor Bugt where the shoreline mountains teem with Little Auks.

Day 6 - On Meteor Island we land at Savigsivik, the southernmost Thule settlement. It was on this island that the famous York meteorite provided the Inuit with a source of iron - until Peary removed it and sold it to an American museum.

Day 7 - At the west side of Saunders Island we will cruise below cliffs on which nest 150,000 Brünnich's Guillemots, together with Kittiwakes and Fulmars, making it, perhaps, the largest seabird colony in Greenland.

Day 8 - We land at Cape Chalon, where we visit old houses of the Thule culture. Then we sail to Siorapaluk, the northernmost Greenlandic village where the people still depend on the hunting of Polar Bear, Narwhal, seals, seabirds and wildfowl. Later we sail into Inglefield Bredning where the icebergs are carved into fantastic shapes by the natural forces of wind and water.

Day 9 - Today we call at Thule (Quaanaaq) the main settlement of the area. In the 1950s the inhabitants of Old Thule (Dundas) were forced to move to Quaanaaq when NATO created an air base at their village. We continue to Hakluyt Island to view a large colony of Brünnich's Guillemots. At this time of year the young are jumping from the ledges into the sea to start their southward migration.

Day 10 - In Booth Sound we make a trip inland to visit an area of High Arctic tundra. There are many lakes here, with a breeding population of ducks and geese.

Day 11 - Just east of Parker Snow Bugt we visit again some colonies with Brünnich's Guillemots and cruise below the spectacular, ice-capped Crimson Cliffs to reach Cape York where, in 1818, the Inuit and White Men first met when Royal Navy ships under John Ross arrived. Today the small settlements on the eastern side of the Cape are deserted, though the mountains behind the shore are still home to thousands of Little Auks.

Day 12 - We sail east through the immense Melville Bugt, admiring again the awesome Greenland ice cap to the east. As we sail close to the edge of a nature reserve we have some chances to see Narwals along the ice edge.

Day 13 - We will sail as close to shore as we can and hope to land on Cape Seddon near the remains of a Thule culture village.

Day 14 - Depending on our schedule we land in the area of Kraulshavn.

Day 15 - At Kingigtorsuaq, where 14th Century Viking Ruins were found, we will try to find the place where the Vikings built a cairn with the inscriptions. From there we sail to Upernavik the main town in North Greenland.

Day 16 - From Upernavik we fly to Reykjavik by chartered plane (flight not included in the voyage cost).

North Greenland – Cape York

RVR13A

July 23 – Aug 15

08 nights

Upernavik - Upernavik
aboard Rembrandt van Rijn



Day 1 - We arrive in Upernavik from Reykjavik by chartered plane (flight not included in the voyage cost). Upernavik (1500 inhabitants) is the main town in North Greenland, where the people still live from hunting seals.

Day 2 - We will go ashore on Kipak, and Kap Shackleton on Agparsuit which still have huge colonies of Brünnich's Guillemots.

Day 3 - At the southern end of Melville Bugt we land at Kuvdlorssuaq the northernmost settlement of the Upernavik district.

Day 4 - We land at Lille Renland, where Reindeer have been found. Here we can walk on the Greenland ice-cap. In this area we may encounter our first sea ice and, if so, there is a chance of spotting Polar Bears hunting seals at the ice edge. Later we land at Red Head. The coast here is dominated by the vast Greenland ice cap which reaches the sea as a series of enormous glacier fronts, the largest outside Antarctica.

An alternative landing place is Cape Seddon near the remains of a Thule culture village.

Day 5 - Today we sail to the western side of Melville Bugt, and then continue into Meteor Bugt. On Meteor Island we land at Savissivik, the southernmost Thule settlement. It was on this island that the famous York meteorite provided the Inuit with a source of iron. Peary removed part of it and sold it to an American museum. As we sail close to the edge of a nature reserve we have some chances to see Narwals along the ice edge.

Day 6 - We reach Cape York where, in 1818, the Inuit and White Men first met when Royal Navy ships under John Ross arrived. Today the small settlements on the eastern side of the Cape are deserted, though the mountains behind the shore are still home to thousands of Little Auks.

Day 7 - We sail the whole day southeast through the immense Melville Bugt, admiring again the awesome Greenland ice cap to the east.

Day 8 - Depending on our schedule we land in the area of Kraulshavn.

Day 9 - From Upernavik we fly to Reykjavik by chartered plane (flight not included in the voyage cost).

North Greenland – Melville Bay

RVR13B

Aug 15 – Aug 22

07 nights

Upernavik - Upernavik
aboard Rembrandt van Rijn



Day 1 - We arrive in Upernavik from Reykjavik by chartered plane (flight not included in the voyage cost). Upernavik (1500 inhabitants) is the main town in North Greenland, where the people still live from hunting seals.

Day 2 - We will go ashore on Kipak, and Kap Shackleton on Agparsuit which still have huge colonies of Brünnich's Guillemots.

Day 3 - At the southern end of Melville Bugt we land at Kuvdlorssuaq the northernmost settlement of the Upernavik district. This is a village with traditional hunters on Narwals and seals, and sometimes a Polar Bear.

Day 4 – 5 - We are in an area close to the Greenland ice-cap, and sail among huge ice-bergs where we will have remote chances to spot Narwals and Polar Bears when we come close to the Melville Bay Nature Reserve. We land at Lille Renland, where Reindeer have been found. Here we can walk on the Greenland ice-cap. Later we land at Red Head. The coast here is dominated by the vast Greenland ice cap which reaches the sea as a series of enormous glacier fronts, the largest outside Antarctica. At Cape Seddon we see the remains of Thule culture dwellings.

Day 6 - Depending on our schedule we land in the area of Kraulshavn.

Day 7 - At Kingigtorsuaq, where 14th Century Viking Ruins were found, we will try to find the place where the Vikings built a cairn with the inscriptions. In Kingitoq we still can see peat houses from the 19th century and good remains from the Thule culture. From there we sail to Upernavik the main town in North Greenland.

Day 8 - From Upernavik we fly to Reykjavik by chartered plane (flight not included in the voyage cost).

North Greenland – Umanak

RVR15

Sep 06 – Sep 21

15 nights

Upernavik - Ilulissat
aboard Rembrandt van Rijn



Day 1 - We arrive in Upernavik from Reykjavik by chartered plane (flight not included in the voyage cost). Upernavik (1500 inhabitants) is the main town in North Greenland, where the people still live from hunting seals.

Day 2 - At the southern end of Melville Bugt we land at Kuvdlorssuaq the northernmost settlement of the Upernavik district.

Day 3 - We land at Lille Renland, where Reindeer have been found. Here we can walk on the Greenland ice-cap. In this area we may encounter our first sea ice and, if so, there is a chance of spotting Polar Bears hunting seals at the ice edge. Later we land at Red Head. The coast here is dominated by the vast Greenland ice cap which reaches the sea as a series of enormous glacier fronts, the largest outside Antarctica. Alternatively we land on Cape Seddon near the remains of a Thule culture village.

Day 4 - Today we sail to the western side of Melville Bugt, calling at Cape Melville and then continuing into Meteor Bugt.

Day 5 - On Meteor Island we land at Savissivik, the southernmost Thule settlement. It was on this island that the famous York meteorite provided the Inuit with a source of iron. Peary removed a part and sold it to an American museum. We will put effort in landing near the meteor site and walk about 2 km inland to find it.

Day 6 - Between Saunders Island and the mainland we sail by the American Thule base from where the inhabitants were moved to Qaanaaq in the 1950s. We could land at Morusaq a recently deserted Greenlandic settlement, an illustration of the depopulation in the peripheral areas of Greenland.

Day 7 - Today we call at Thule (Qaanaaq) the main settlement of the area. In the 1950s the inhabitants of Old Thule (Dundas) were forced to move to Qaanaaq when NATO created an air base at their village.

Day 8 - In Booth Sound we make a trip inland to visit an area of High Arctic tundra. There are many lakes here, where snow geese collect for their winter migration.

Day 9 - Just east of Parker Snow Bugt we cruise below the spectacular, ice-capped Crimson Cliffs to reach Cape York where, in 1818, the Inuit and White Men first met when Royal Navy ships under John Ross arrived. Today the small settlements on the eastern side of the Cape are deserted.

Day 10 - At sea heading for the Ummannaq area. While in the Melville Bugt we again admire the awesome Greenland ice-cap to the east.

Day 11 - We reach Svartenhuk Halvø, where we land at Svartenhavn. We will walk on an extensive tundra, dotted with lakes, where we will encounter ducks, geese and Muskoxen.

Day 12 - Today we circumnavigate Upernivik ø and sail through narrow fjords surrounded by mountains of over 2000 m and glaciers and ice-bergs at all sides and land at the valley where Wegener ascended to the Greenland ice-cap 80 years ago. It is close to Marmorilik, a Zinc and Lead Mine high in the mountains, the Black Angel.

Day 13 - In Ummannaq (about 1000 inhabitants) seal hunting is still an important source of income for the local people and they also have many dogs which haul their sledges in winter. We will also visit the nearby Qilakitsoq site, on the north coast of the Nugsuaq Peninsula, where some years ago a family of mummified Thule culture people from the 15th Century was found.

Day 14 - At the west side of Nuussuaq Peninsula we land at Bjørnefelden, a ruin attributed to the Vikings

Day 15 - In the afternoon we sail among the icebergs along the large Jakobshavn Glacier. Later we sail to Ilulissat (5000 inhabitants), an important West Greenland town, with museums, institutes, bookstores, etc.

Day 16 - From Ilulissat we fly to Reykjavik by chartered plane (flight not included in the voyage cost).



Day 1 - We arrive at Ilulissat from Reykjavik by chartered plane (flight not included in the voyage cost). Ilulissat (5000 inhabitants) is an important West Greenland town, with museums, institutes, bookstores, etc.

Day 2 - Today we find ourselves just south of the large Jakobshavn Glacier with its enormous ice-bergs. We climb the hill at Avangardlit from where we have fantastic view across the Jakobshavn Isfjord, which is a World Heritage site.

Day 3 - The island groups of Hundehøjland and Kronprinsens Eiland in the mouth of the Disko Bay, are surrounded by rich waters which attract both seabirds and whales. We intend to call at the small settlement on Hundehøjland where old dwellings of Greenland's Thule culture (dating from the 11th century) and graves from 18th century Dutch whalers can be seen.

Day 4 - We arrive at Sydbay (Ukivik), where the 18th Century whalers traded with the Eskimo's at the occasion of the yearly Assivik, when people from a large area come together, on a beautiful sandy beach. We land also at nearby Isortoq with remains of houses of the Thule culture. In this area we may see Reindeer.

Day 5 - Kangaamiut at the mouth of Evighedsfjord is a friendly Greenlandic village where people still indulge in handcraft.

Day 6 - Nuuk (Godthåb), the capital of Greenland has a population of about 14,000. An excursion should include a visit to the museum which has a remarkable collection of Inuit mummies, dating from the 15th Century, which were found near Uummannaq, further to the north. The Cultural Centre of Nuuk, which each year has an exhibition of the work of a Greenlandic artist, is also worth visiting. The waters to the west of the town are a good place to see Humpback Whales and Blue Whales. In the evening we land at the southern tip of Akilia, where the oldest exposed rocks of our planet (3.8 million years) can be found.

Day 7 - We call at Fiskerhøvet (formerly called Brielse Haven) and Lichtenfels a Hernhuters mission post from the 18th century.

Day 8 - We sail past Flade Isblink and keep a lookout for Humpback Whales and Minke Whales

Day 9 - In Ivittuut we walk along the remains of a Cryolite mine and around a small cemetery connected with it. Later we sail into Ikat Fjord famous for the curious underwater structures formed by mineral precipitation. In this area we see Musk Oxen, which were introduced into the area in the last century.

Day 10 - We will try to get to Uunartoq, where we take a bath in a hot spring surrounded by ice bergs. Later we sail along a great series of stranded ice-bergs to Lichtenau a lovely but nearly deserted Greenlandic village, where the Hernhuters (Moravian brothers) had a mission in the 18th Century.

Day 11 - In the morning we sail to the beautiful glacier fronts of Qaleralik Sermia, where we will have some zodiac excursions and make some landings near the glacier. Deeper into Bredefjord at Qoornooq we land in an area with beautiful remains of houses from the Thule culture.

Day 12 - In Eriksfjord we visit the Viking sites of Gardar (a walk of 3 km from the landing site) and Brattahlíð, where Erik Red lived about a thousand years ago. In the evening we arrive at the airport of Narsarsuaq.

Day 13 - From Narsarsuaq we fly by regular plane to Reykjavik or Copenhagen (flight not included in the voyage cost).